



February 20, 2015

TO: LOCSO Board of Directors  
FROM: Margaret Falkner, Utility Compliance Technician III  
SUBJECT: **Agenda Item 9B – 3/5/2015 Board Meeting**  
Utilities Department Report for January 2015

**President**  
R. Michael Wright

**Vice President**  
Marshall E. Ochylski

**Directors**  
Charles L. Cesena  
Jon-Erik G. Storm  
Louis G. Tornatzky

**General Manager**  
Kathy A. Kivley

**District Accountant**  
Michael L. Doyel

**Fire Chief**  
Robert Lewin

**Battalion Chief**  
Phill Veneris

**Mailing Address:**  
P.O. Box 6064  
Los Osos, CA 93412

**Offices:**  
2122 9<sup>th</sup> Street, Suite 102  
Los Osos, CA 93402

**Phone:** 805/528-9370  
**FAX:** 805/528-9377

www.locsd.org

**WATER PRODUCTION**

The total production for the month of **January 2015** was approximately **15.2 million gallons (MG)** this equates to an average daily demand of 489,500 gallons. This represents a **decrease** in production from last year by approximately **15%**.

Fifty-seven percent of the service area received bills for approximately **14.3 MG** consumption for the period **December 10, 2014 through February 11, 2015**. This generated **\$138,344** in revenue. This represents a decrease in consumption by approximately **10%** and an increase in revenue by approximately **1%** when compared to last year. Graphs and tables are attached.

**PRODUCTION AND RUNTIME HOURS BY WELL SITE**

Below are two tables that break down the production by well site and the runtime on the pump motor for the month of January 2015. Totals for last year are included for comparison:

<b>Production (MG) January</b>	<b>2015</b>	<b>2014</b>
Palisades	0.0000	5.3300
3rd Street	2.9965	3.1804
El Moro	4.6738	4.6202
10th Street	6.0667	3.6954
South Bay (lower)	1.4372	0.9544
South Bay (upper)	0.0000	0.0000
<b>TOTAL:</b>	<b>15.1742</b>	<b>17.7804</b>

<b>Runtime (Hours) January</b>	<b>2015</b>	<b>2014</b>
Palisades	0.0	154.6
3rd St	702.1	733.7
El Moro	225.4	215.9
10th St	321.5	198.0
South Bay (lower)	504.5	734.9
South Bay (upper)	0.0	0.0
<b>TOTAL:</b>	<b>1753.5</b>	<b>2037.1</b>

Please refer to the attached January 2015 "Well Log Summaries" for more data regarding production, runtime hours, chemical usage, soundings, and alarms.

## **CALIFORNIA STATE OF EMERGENCY DUE TO DROUGHT**

On January 17, 2014, Governor Brown declared an emergency due to drought. He has called on all Californians to restrain water use. Attached to this report are graphs with tables which provide information on the District's water well depths. ***We remain officially in a drought.***

### **WATER CONSERVATION**

Customers in the District's water service area are encouraged to stop by the office during lobby hours, 9:00 am until 3:00 pm, and pick up water conservation fixtures. We have 1.5 gallons per minute (gpm) high efficiency showerhead with on/off valve; 1.5 gpm kitchen sink swivel aerator; packets of leak detection dye tablets for toilet tanks; a drip gauge cylinder to measure small drips; and a water saving garden hose nozzle. Also available to our customers is a five minute shower timer. For citizens with internet access, visit the new Facebook page for the Save Los Osos Water campaign. <https://www.facebook.com/SaveLosOsosWater>

For those who don't have a Facebook or Twitter Account here is a link to the Save Los Osos Water website: <http://www.savelosososwater.org/>

The District provides posters to businesses and homeowners in Los Osos. Visit our office during lobby hours and pick up a poster if you want to help spread the "Save Los Osos Water" message. Messages continue to be displayed on the Rotary sign at the corner of Los Osos Valley Road and South Bay Boulevard.

### **SAN LUIS OBISPO COUNTY WATER CONSERVATION REBATE PROGRAM**

All Los Osos residents that will be connected to the Los Osos Wastewater Project may qualify for rebates on plumbing fixtures. Here is the link to the County's brochure: [http://www.slocounty.ca.gov/Assets/PW/LOWWP/water+conservation+brochure+Jan+2015+\(rev\).pdf](http://www.slocounty.ca.gov/Assets/PW/LOWWP/water+conservation+brochure+Jan+2015+(rev).pdf)

### **UTILITIES DEPARTMENT OPERATIONS AND MAINTENANCE FOR WATER SYSTEM**

During the month of January 2015, crew provided weekly water sampling for water permit compliance, read water meters for billing, and performed monthly well soundings. In addition to their regular schedule, crews upgraded and split a service for a customer on 11<sup>th</sup> Street. Crews continued work on the meter replacement program, and fire hydrant maintenance. Staff submitted the monthly monitoring report to the State Water Resource Control Board Drinking Water Division for January 2015 with no violations noted.

### **DRAINAGE WDID # 3 40M2000133**

The District complies with the General National Pollutant Discharge Elimination System (NPDES) Permit for storm water discharges for small Municipal Separate Storm Sewer Systems (MS4). Under the new permit, all Community Services Districts are considered "Non-traditional" MS4s. Staff has been working with Wallace Group on year two requirements for reporting. We continue to attend the monthly meetings of the Central Coast Partners for Water Quality. Staff joined the California Stormwater Quality Association (CASQA) for additional resources concerning stormwater quality management, science, and regulation.

Below is a table of the rain measured at our operations facility between January 1 and December 31.

Year (Calendar)	Inches
2009	12.98
2010	19.79
2011	13.66
2012	9.56
2013	3.12
2014	12.51

**BAYRIDGE ESTATES WDID# 3 401027001**

Crews continue monitoring and grounds keeping at this facility. In January crews removed roots from the collection system. Once connected to the Los Osos Wastewater Project, the District crews will no longer maintain the septic system. Prior to connection there will be projects to be completed for County acceptance of the system. Another item on this agenda will address four of these required projects.

**VISTA DE ORO WDID# 3 401024001**

Crews continue monitoring and grounds keeping at this facility. In January crews removed roots from the collection system. Once connected to the Los Osos Wastewater Project, the District crews will no longer maintain the septic system. Prior to connection there will be projects to be completed for County acceptance of the system.

**RECOMMENDATION**

Staff encourages the Board to ask any questions they may have with regard to the aforementioned report or any other related item that may be listed separately as an agenda item.

Attachments

<b>JANUARY 2015</b>	8th St./ El Moro Well	3rd St./ Bayside Well	10th St. Well	South Bay Lower Well	South Bay Upper Well	Palisades Well	All Wells TOTAL	Last Years TOTAL	Percent% Differential
Total Gallons Produced, Mgal	4.6738	2.9965	6.0667	1.4372	0.0000	0.0000	15.1742	17.7804	-14.66%
Average Daily Flow, Mgal							0.4895	0.5736	-14.66%
Total Gallons to Waste (Filter Backwash), Mgal	0.0000			0.0000	0.0000		0.0000	0.0000	0.00%
Total Gallons to Waste (System Flushing), Mgal							0.0000	0.0000	0.00%
Distribution System Losses (Water Line Breaks), Mgal							0.0000	0.0030	-100.00%
Total Gallons Adjusted, Mgal	4.6738			1.4372			15.1742	17.7774	-14.64%
Pump Runtime, total hours	225.4	702.1	321.5	504.5		0.0	1753.5	2037.1	-16.17%
Daily Avg. Runtime, hours/day	7.3	22.6	10.4	16.3		0.0			
Energy Used, kWatts	8936	5558	12947	6016		0	33457	43537	-23.15%
Eff. Ratio, kWatts/hr	39.65	7.92	40.27	11.92		0.00			
Chlorine Used, total gallons	60.9	36.0	35.1	27.5		0.0	159.5	207.7	-23.22%
Aqua Mag, pounds	80.8		55.4	0.0		0.0	136.2	155.8	-12.58%
Static water level, ft.	31.50	7.10	151.80	117.30	92.80	91.50			
Pump water level, ft.	142.70	55.00	249.50	177.90	0.00	0.00	Palisades Well out of service		
Draw-down level, ft.	111.20	47.90	97.70	60.60	0.00	0.00			
Gallons per minute	350	74	310	58	0	0			
Pressure, psi	93	82	35	63	0	0			
<b>Alarm Events</b>									
YES / NO	YES	NO	YES	NO	NO	YES			
<b>Type of event</b>									
Well Failure						7	7		
Power Failure							0		
Low Chlorine	2					1	3		
Other:			4				4		
<b>Total number alarms</b>	2	0	4	0		8	14	4	250.00%

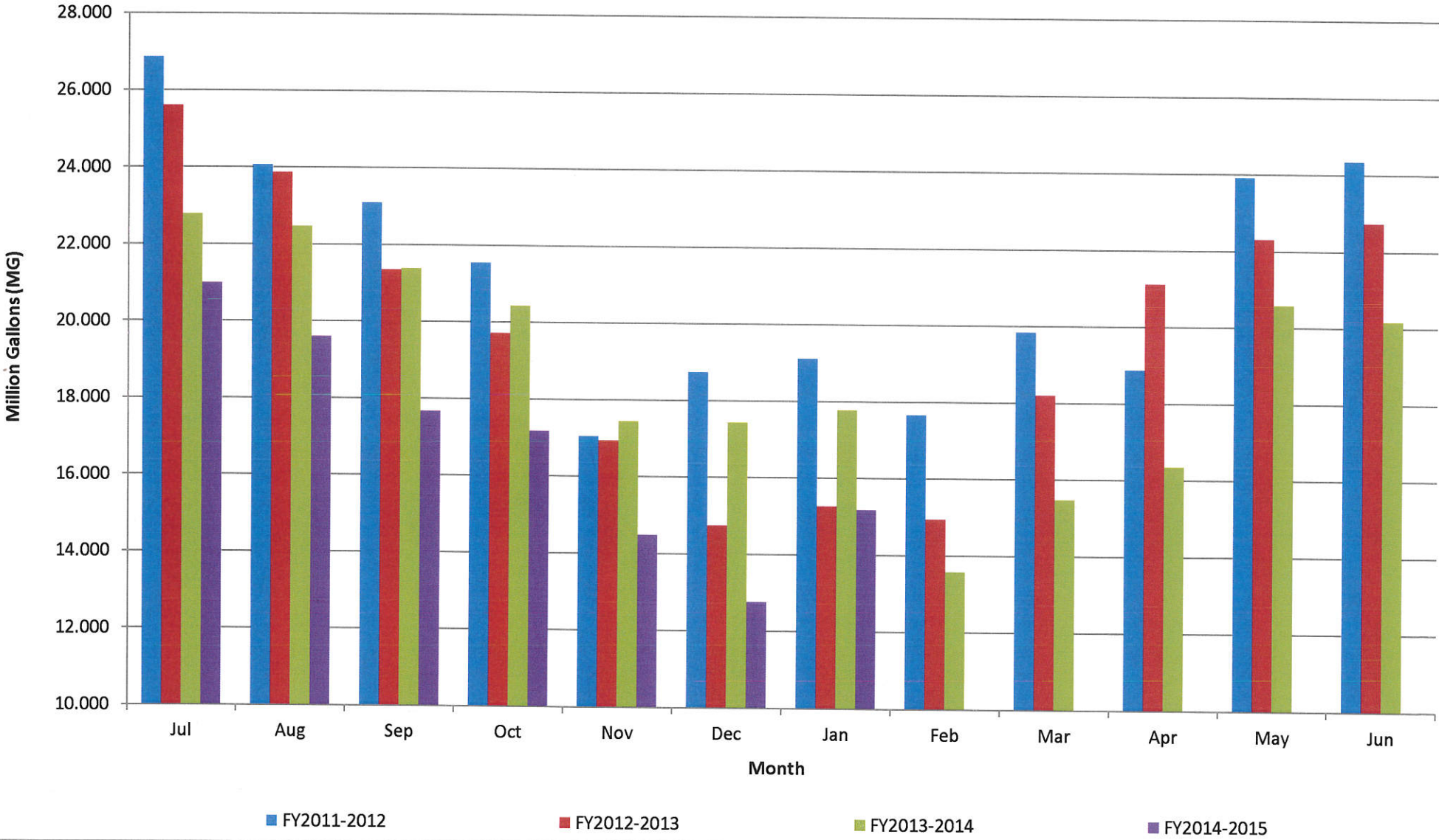
## LOCSD Water Data

### Water Production Data in Million Gallons

	FY 11-12	FY 12-13	FY 13-14	FY 14-15
Jul	26.868	25.600	22.779	20.979
Aug	24.064	23.862	22.470	19.593
Sep	23.086	21.340	21.380	17.668
Oct	21.543	19.708	20.431	17.169
Nov	17.046	16.939	17.436	14.482
Dec	18.745	14.747	17.431	12.759
Jan	19.117	15.268	17.780	15.174
Feb	17.662	14.940	13.584	
Mar	19.843	18.193	15.476	
Apr	18.873	21.118	16.354	
May	23.914	22.310	20.591	
Jun	24.347	22.743	20.179	
<b>TOTAL</b>	<b>255.107</b>	<b>236.767</b>	<b>225.890</b>	<b>117.825</b>

Consumption is billed for a two month period every month.  
Revenue is based on gallons billed - not cash received.  
Production is recorded daily.

## Historical to Present LOCS D Well Production Data

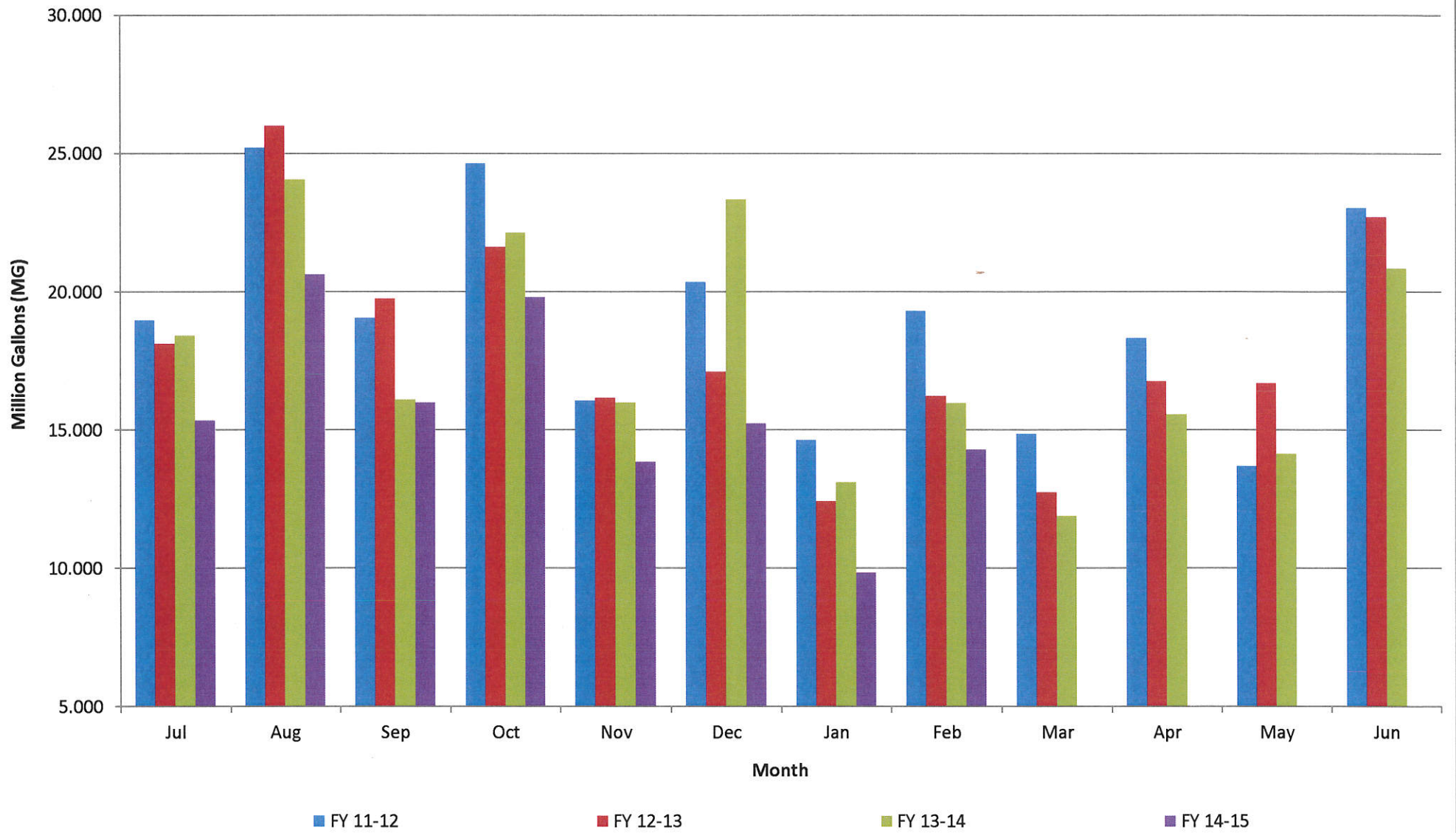


### LOCSD Water Data

Water Consumption Data in Million Gallons						
% of Service Area	Billing Period		FY 11-12	FY 12-13	FY 13-14	FY 14-15
43	5/11 to 7/10	Jul	18.950	18.110	18.402	15.330
57	6/11 to 8/10	Aug	25.210	26.006	24.061	20.627
43	7/11 to 9/10	Sep	19.044	19.748	16.087	15.989
57	8/11 to 10/10	Oct	24.636	21.617	22.142	19.804
43	9/11 to 11/10	Nov	16.048	16.155	15.994	13.830
57	10/11 to 12/10	Dec	20.355	17.096	23.342	15.236
43	11/11 to 1/10	Jan	14.623	12.406	13.105	9.828
57	12/11 to 2/10	Feb	19.294	16.223	15.969	14.276
43	1/11 to 3/10	Mar	14.858	12.737	11.886	
57	2/11 to 4/10	Apr	18.313	16.756	15.559	
43	3/11 to 5/10	May	13.685	16.686	14.131	
57	4/11 to 6/10	Jun	23.029	22.709	20.852	
		<b>TOTAL</b>	<b>228.044</b>	<b>216.249</b>	<b>211.530</b>	<b>124.920</b>

Consumption is billed for a two month period every month.  
 Revenue is based on gallons billed - not cash received.  
 Production is recorded daily.

## Historical to Present LOCS D Water Consumption





**LOCSD Water Data**

<b>Water Revenue Data</b>						
<b>% of Service Area</b>	<b>Billing Period</b>		<b>FY 11-12</b>	<b>FY 12-13</b>	<b>FY 13-14</b>	<b>FY 14-15</b>
43	5/11 to 7/10	Jul	\$129,524.46	\$127,737.70	\$150,401.90	\$137,752.98
57	6/11 to 8/10	Aug	\$167,062.07	\$175,798.70	\$147,246.54	\$187,468.02
43	7/11 to 9/10	Sep	\$134,650.62	\$139,628.43	\$145,135.28	\$147,808.06
57	8/11 to 10/10	Oct	\$165,624.63	\$163,698.98	\$187,431.78	\$182,463.96
43	9/11 to 11/10	Nov	\$113,044.46	\$128,918.55	\$143,029.03	\$130,772.31
57	10/11 to 12/10	Dec	\$141,492.06	\$142,026.32	\$206,187.91	\$145,977.27
43	11/11 to 1/10	Jan	\$105,371.44	\$104,328.08	\$120,500.40	\$99,970.19
57	12/11 to 2/10	Feb	\$134,692.14	\$132,433.64	\$137,045.65	\$138,344.52
43	1/11 to 3/10	Mar	\$105,313.67	\$95,487.96	\$111,475.31	
57	2/11 to 4/10	Apr	\$128,368.97	\$135,947.81	\$121,943.68	
43	3/11 to 5/10	May	\$99,287.66	\$133,939.00	\$128,784.61	
57	4/11 to 6/10	Jun	\$156,744.35	\$172,139.37	\$187,230.13	
		<b>TOTAL</b>	<b>\$1,581,176.53</b>	<b>\$1,652,084.54</b>	<b>\$1,786,412.22</b>	<b>\$1,170,557.31</b>

Consumption is billed for a two month period every month.  
 Revenue is based on gallons billed - not cash received.  
 Production is recorded daily.

## Historical to Present LOCS D Water Revenue

