



March 26, 2015

**TO:** LOCSD Board of Directors  
**FROM:** Margaret Falkner, Utility Compliance Technician III  
**SUBJECT:** **Agenda Item 9B – 4/2/2015 Board Meeting**  
 Utilities Department Report for February 2015

*MLF*

**President**  
 R. Michael Wright

**Vice President**  
 Marshall E. Ochylski

**Directors**  
 Charles L. Cesena  
 Jon-Erik G. Storm  
 Louis G. Tornatzky

**General Manager**  
 Kathy A. Kivley

**District Accountant**  
 Michael L. Doyel

**Fire Chief**  
 Robert Lewin

**Battalion Chief**  
 Phill Veneris

**Mailing Address:**  
 P.O. Box 6064  
 Los Osos, CA 93412

**Offices:**  
 2122 9<sup>th</sup> Street, Suite 102  
 Los Osos, CA 93402

**Phone:** 805/528-9370  
**FAX:** 805/528-9377

www.locsd.org

**WATER PRODUCTION**

The total production for the month of **February 2015** was approximately **13.1 million gallons (MG)** this equates to an average daily demand of 469,342 gallons. This represents a **decrease** in production from last year by approximately **3%**.

Forty-three percent of the service area received bills for approximately **11.0 MG** consumption for the period **January 10, 2014 through March 11, 2015**. This generated **\$109,092** in revenue. This represents a decrease in consumption by approximately **7%** and an increase in revenue by approximately **2%** when compared to last year. Graphs and tables are attached.

**PRODUCTION AND RUNTIME HOURS BY WELL SITE**

Below are two tables that break down the production by well site and the runtime on the pump motor for the month of February 2015. Totals for last year are included for comparison:

<b>Production (MG) February</b>	<b>2015</b>	<b>2014</b>
Palisades	0.0000	3.1850
3 <sup>rd</sup> Street/Bayside	2.5356	2.8438
8 <sup>th</sup> Street/EI Moro	4.1732	3.9904
10 <sup>th</sup> Street	4.8767	2.6138
South Bay (lower)	1.5528	0.9505
South Bay (upper)	0.0033	0.0000
<b>TOTAL:</b>	<b>13.1416</b>	<b>13.5835</b>

<b>Runtime (Hours) February</b>	<b>2015</b>	<b>2014</b>
Palisades	0.0	91.9
3 <sup>rd</sup> Street/Bayside	610.9	654.4
8 <sup>th</sup> Street/EI Moro	206.1	188
10 <sup>th</sup> St	257.0	136.8
South Bay (lower)	544.0	658.2
South Bay (upper)	14.6	0.0
<b>TOTAL:</b>	<b>1632.6</b>	<b>1729.3</b>

Please refer to the attached February 2015 "Well Log Summaries" for more data regarding production, runtime hours, chemical usage, soundings, and alarms.

## **CALIFORNIA STATE OF EMERGENCY DUE TO DROUGHT**

On January 17, 2014, Governor Brown declared an emergency due to drought. He has called on all Californians to restrain water use. Attached to this report are graphs with tables which provide information on the District's water well depths. ***We remain officially in a drought.***

## **SEAWATER INTRUSION NOTICE TO WATER CUSTOMERS**

Staff mailed a full page double sided insert in the February and March water bills to notify the District's customers about seawater intrusion. A copy of the insert is attached to this report. One side was printed in English and the other has the Spanish translation. The insert notified customers that if the drought continued through April it will likely trigger a Stage 3 Water Shortage Emergency. A separate action item on this agenda addresses the emergency.

## **WATER CONSERVATION**

Customers in the District's water service area are encouraged to stop by the office during lobby hours, 9:00 am until 3:00 pm, and pick up water conservation fixtures. We have 1.5 gallons per minute (gpm) high efficiency showerhead with on/off valve, a 5-minute shower timer, 1.5 gpm kitchen sink swivel aerator, packets of leak detection dye tablets for toilet tanks, a drip gauge cylinder to measure small drips, and a water saving garden hose nozzle. For citizens with internet access, visit the new Facebook page for the Save Los Osos Water Campaign.

<https://www.facebook.com/SaveLosOsosWater>

For those who don't have a Facebook or Twitter Account here is a link to the Save Los Osos Water website: <http://www.savelosososwater.org/>

The District provides posters to businesses and homeowners in Los Osos. Visit our office during lobby hours and pick up a poster if you want to help spread the "Save Los Osos Water" message. Messages continue to be displayed on the Rotary sign at the corner of Los Osos Valley Road and South Bay Boulevard.

## **SAN LUIS OBISPO COUNTY WATER CONSERVATION REBATE PROGRAM**

All Los Osos residents that will be connected to the Los Osos Wastewater Project may qualify for rebates on plumbing fixtures. Here is the link to the County's brochure: [http://www.slocounty.ca.gov/Assets/PW/LOWWP/water+conservation+brochure+Jan+2015+\(rev\).pdf](http://www.slocounty.ca.gov/Assets/PW/LOWWP/water+conservation+brochure+Jan+2015+(rev).pdf)

## **UTILITIES DEPARTMENT OPERATIONS AND MAINTENANCE FOR WATER SYSTEM**

During the month of February 2015, crews provided weekly water sampling for water permit compliance, read water meters for billing, and performed monthly well soundings. In addition to their regular schedule, crews worked with contractors to replace the 8<sup>th</sup> Street well motor and pump, replaced a hydrant on 17<sup>th</sup> and Paso Robles, and repaired a service line leak at the water yard. Crews continued work on the meter replacement program, and fire hydrant maintenance. Staff submitted the monthly monitoring report to the State Water Resource Control Board Drinking Water Division for February 2015 with no violations noted.

## **DRAINAGE WDID # 3 40M2000133**

The District complies with the General National Pollutant Discharge Elimination System (NPDES) Permit for storm water discharges for small Municipal Separate Storm Sewer Systems (MS4). Under the new permit, all Community Services Districts are considered "Non-traditional" MS4s. Staff has been working with Wallace Group on year two requirements for reporting. We continue to attend the monthly meetings of the Central Coast Partners for Water Quality. We are a member of the California Stormwater Quality Association (CASQA) for additional resources concerning stormwater quality management, science, and regulations.

Below is a table of the rain measured at our operations facility between January 1 and December 31.

Year (Calendar)	Inches
2012	9.56
2013	3.12
2014	12.51

**BAYRIDGE ESTATES WDID# 3 401027001**

Crews continue monitoring and grounds keeping at this facility. Once connected to the Los Osos Wastewater Project, the District crews will no longer maintain the septic system. Prior to connection there will be projects to be completed for County acceptance of the system.

**VISTA DE ORO WDID# 3 401024001**

Crews continue monitoring and grounds keeping at this facility. Once connected to the Los Osos Wastewater Project, the District crews will no longer maintain the septic system. Prior to connection there will be projects to be completed for County acceptance of the system.

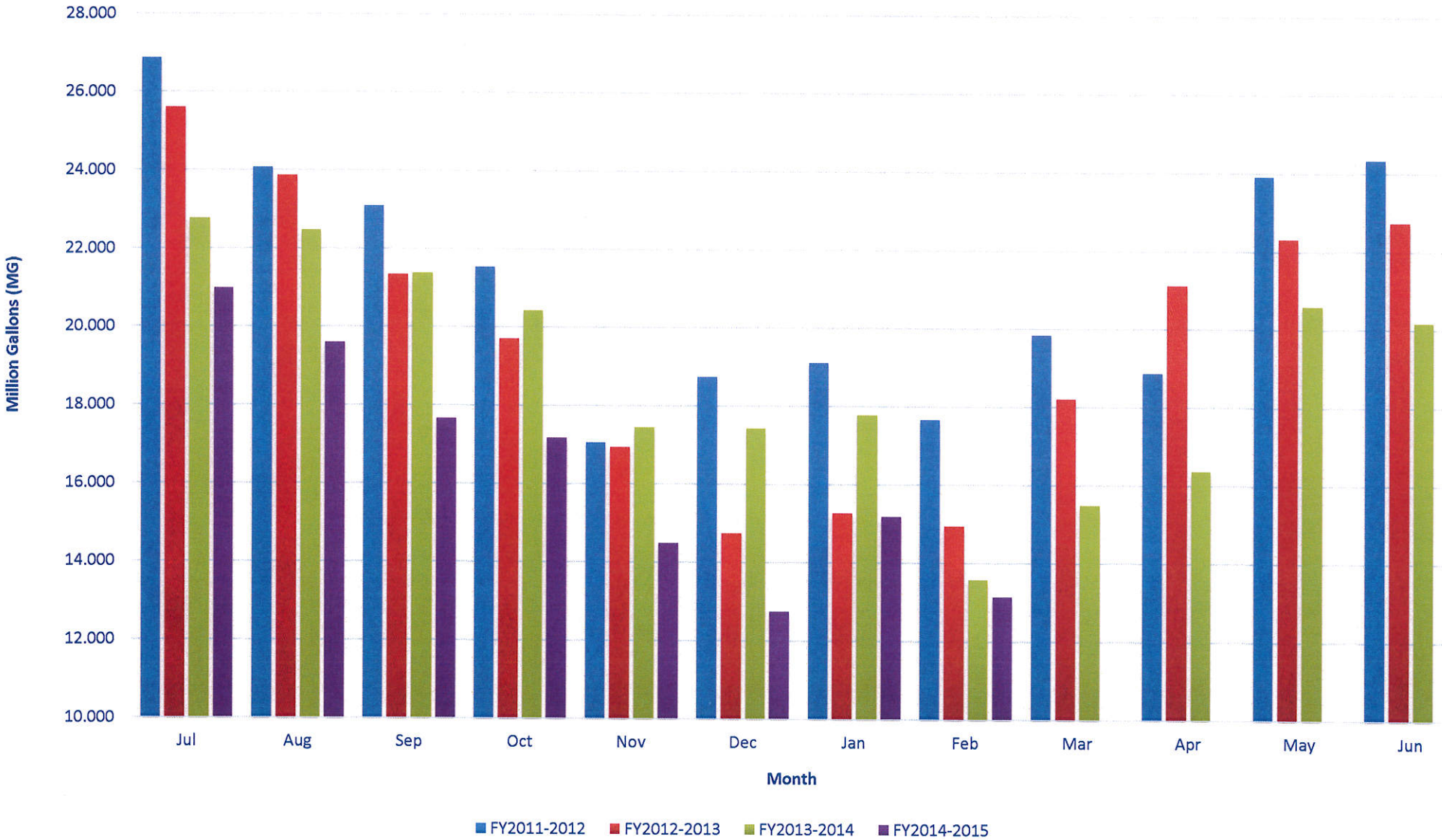
**RECOMMENDATION**

Staff encourages the Board to ask any questions they may have with regard to the aforementioned report or any other related item that may be listed separately as an agenda item.

Attachments

February 2015	8th St./ EI Moro Well	3rd St./ Bayside Well	10th St. Well	South Bay Well	South Bay Upper Well	Palisades Well	All Wells TOTAL	Last Years TOTAL	Percent% Differential
Total Gallons Produced, Mgal	4.1732	2.5356	4.8767	1.5528	0.0033	0.0000	13.1416	13.5835	-3.25%
Average Daily Flow, Mgal							0.4693		
Total Gallons to Waste (Filter Backwash), Mgal							0.0000	0.0355	
Total Gallons to Waste (System Flushing), Mgal							0.0000	0	
Distribution System Losses (Water Line Breaks), Mgal							0.0000	0.0041	
Total Gallons Adjusted, Mgal	4.1732			1.5528			13.1416	13.5439	-2.97%
Pump Runtime, total hours	206.1	610.9	257.0	544.0	14.6	0.0	1632.6		100.00%
Daily Avg. Runtime, hours/day	7.4	21.8	9.2	19.4	0.5	0.0			
Energy Used, kWatts	8034	4848	10658	6573		1	30114		#DIV/0!
Eff. Ratio, kWatts/hr	38.98	7.94	41.47	12.08		0.00			
Chlorine Used, total gallons	54.3	26.6	28.5			0.0	109.4		#DIV/0!
Aqua Mag, pounds	70.6		1.8	0.0		0.0	72.4		#DIV/0!
Static water level, ft.	32.00	6.90	150.70	116.80	92.40	0.00			
Pump water level, ft.	135.40	52.60	246.20	177.10	0.00	0.00			
Draw-down level, ft.	103.40	45.70	95.50	60.30	-92.40	0.00			
Gallons per minute	330	71	310	40	0	0			
Pressure, psi	89	70	36	61	0	0			

## Historical to Present LOCSD Well Production Data



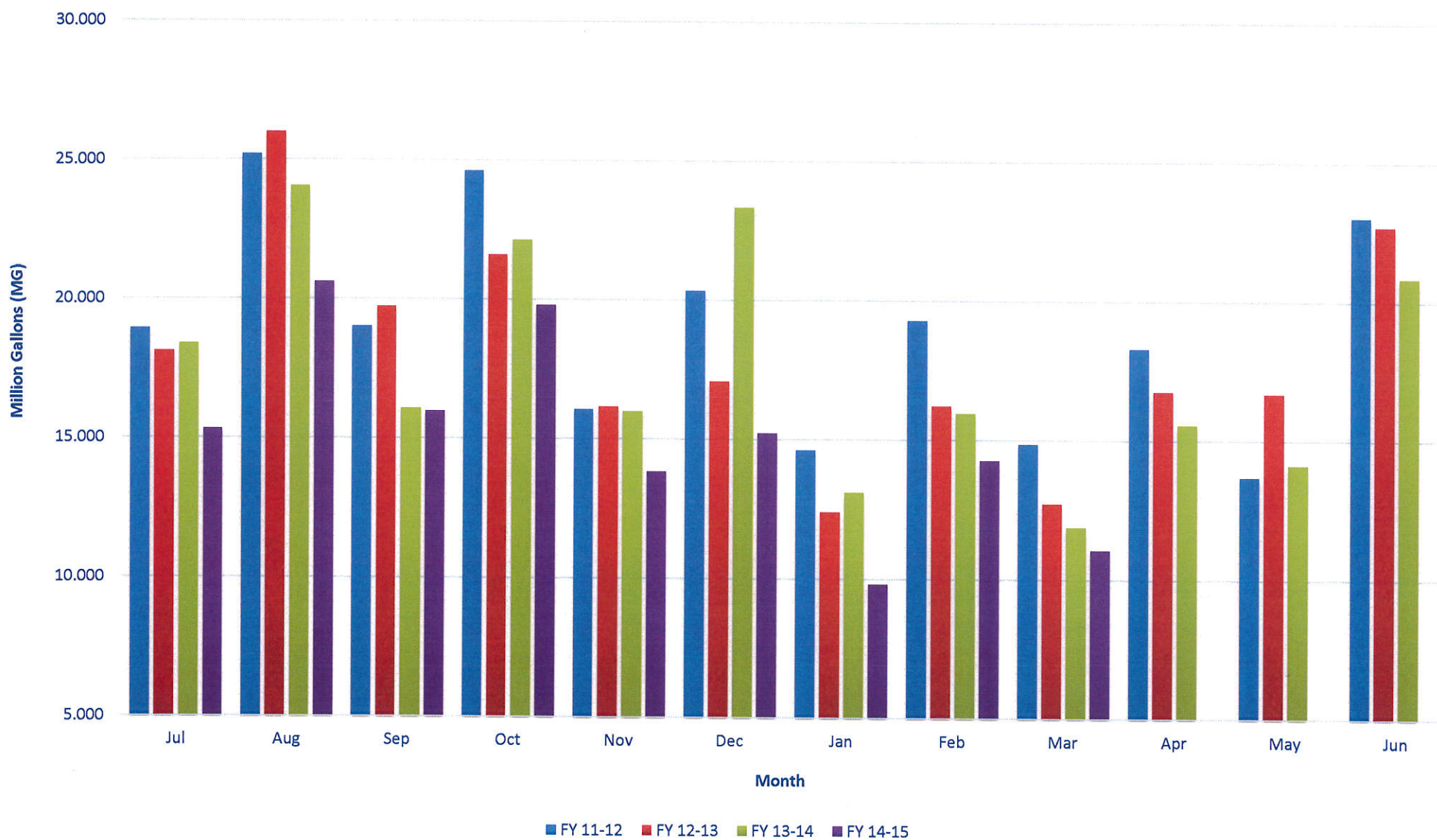
## LOCSD Water Data

### Water Production Data in Million Gallons

	<b>FY 11-12</b>	<b>FY 12-13</b>	<b>FY 13-14</b>	<b>FY 14-15</b>
Jul	26.868	25.600	22.779	20.979
Aug	24.064	23.862	22.470	19.593
Sep	23.086	21.340	21.380	17.668
Oct	21.543	19.708	20.431	17.169
Nov	17.046	16.939	17.436	14.482
Dec	18.745	14.747	17.431	12.759
Jan	19.117	15.268	17.780	15.174
Feb	17.662	14.940	13.584	13.142
Mar	19.843	18.193	15.476	
Apr	18.873	21.118	16.354	
May	23.914	22.310	20.591	
Jun	24.347	22.743	20.179	
<b>TOTAL</b>	<b>255.107</b>	<b>236.767</b>	<b>225.890</b>	<b>130.966</b>

Consumption is billed for a two month period every month.  
 Revenue is based on gallons billed - not cash received.  
 Production is recorded daily.

## Historical to Present LOCS D Water Consumption



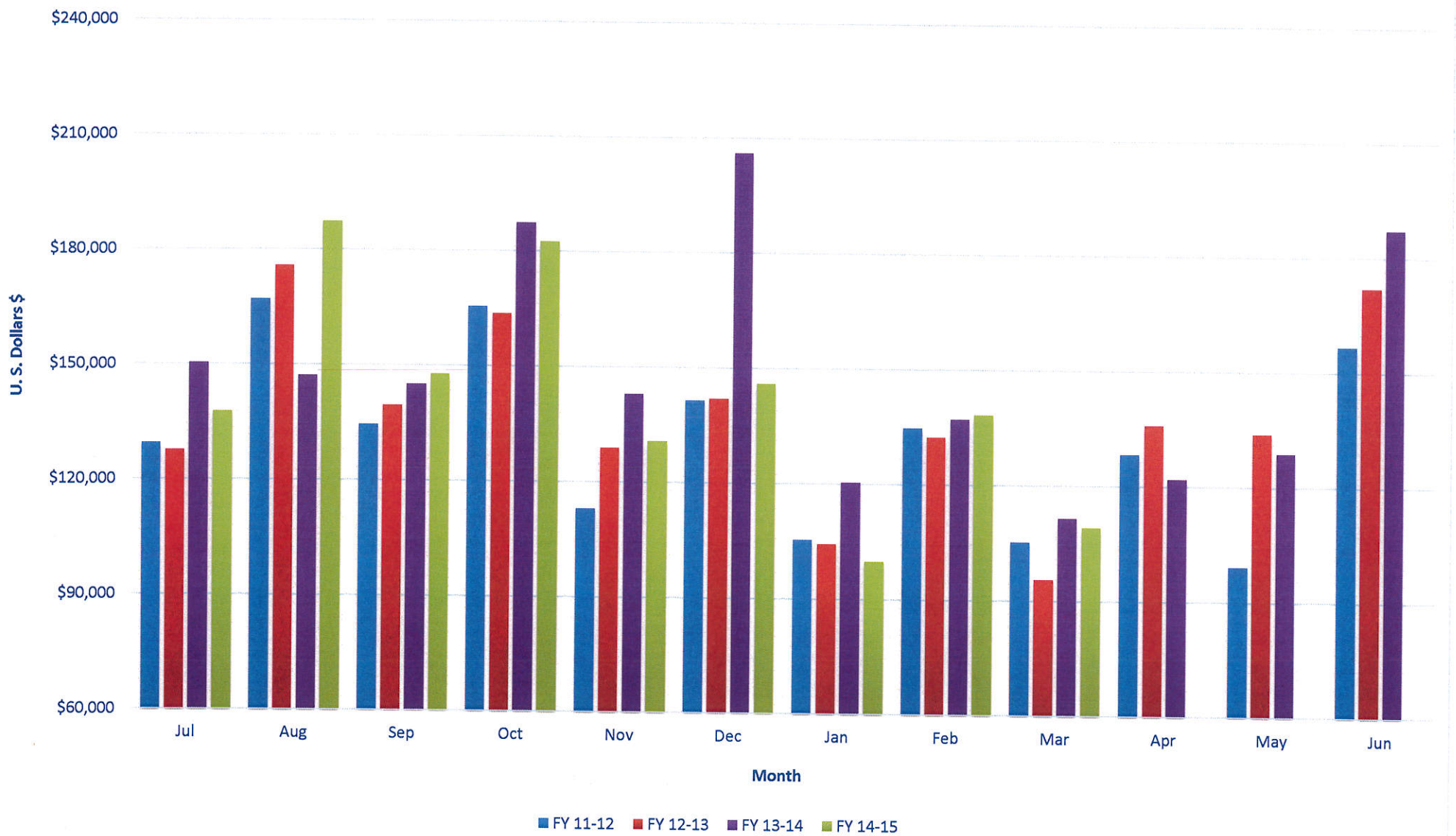
### LOCSD Water Data

Water Consumption Data in Million Gallons						
% of Service Area	Billing Period		FY 11-12	FY 12-13	FY 13-14	FY 14-15
43	5/11 to 7/10	Jul	18.950	18.110	18.402	15.330
57	6/11 to 8/10	Aug	25.210	26.006	24.061	20.627
43	7/11 to 9/10	Sep	19.044	19.748	16.087	15.989
57	8/11 to 10/10	Oct	24.636	21.617	22.142	19.804
43	9/11 to 11/10	Nov	16.048	16.155	15.994	13.830
57	10/11 to 12/10	Dec	20.355	17.096	23.342	15.236
43	11/11 to 1/10	Jan	14.623	12.406	13.105	9.828
57	12/11 to 2/10	Feb	19.294	16.223	15.969	14.276
43	1/11 to 3/10	Mar	14.858	12.737	11.886	11.079
57	2/11 to 4/10	Apr	18.313	16.756	15.559	
43	3/11 to 5/10	May	13.685	16.686	14.131	
57	4/11 to 6/10	Jun	23.029	22.709	20.852	
		<b>TOTAL</b>	<b>228.044</b>	<b>216.249</b>	<b>211.530</b>	<b>136.000</b>

Consumption is billed for a two month period every month.  
 Revenue is based on gallons billed - not cash received.  
 Production is recorded daily.



## Historical to Present LOCSD Water Revenue



### LOCSD Water Data

Water Revenue Data						
% of Service Area	Billing Period		FY 11-12	FY 12-13	FY 13-14	FY 14-15
43	5/11 to 7/10	Jul	\$129,524.46	\$127,737.70	\$150,401.90	\$137,752.98
57	6/11 to 8/10	Aug	\$167,062.07	\$175,798.70	\$147,246.54	\$187,468.02
43	7/11 to 9/10	Sep	\$134,650.62	\$139,628.43	\$145,135.28	\$147,808.06
57	8/11 to 10/10	Oct	\$165,624.63	\$163,698.98	\$187,431.78	\$182,463.96
43	9/11 to 11/10	Nov	\$113,044.46	\$128,918.55	\$143,029.03	\$130,772.31
57	10/11 to 12/10	Dec	\$141,492.06	\$142,026.32	\$206,187.91	\$145,977.27
43	11/11 to 1/10	Jan	\$105,371.44	\$104,328.08	\$120,500.40	\$99,970.19
57	12/11 to 2/10	Feb	\$134,692.14	\$132,433.64	\$137,045.65	\$138,344.52
43	1/11 to 3/10	Mar	\$105,313.67	\$95,487.96	\$111,475.31	\$109,092.25
57	2/11 to 4/10	Apr	\$128,368.97	\$135,947.81	\$121,943.68	
43	3/11 to 5/10	May	\$99,287.66	\$133,939.00	\$128,784.61	
57	4/11 to 6/10	Jun	\$156,744.35	\$172,139.37	\$187,230.13	
<b>TOTAL</b>			<b>\$1,581,176.53</b>	<b>\$1,652,084.54</b>	<b>\$1,786,412.22</b>	<b>\$1,279,649.56</b>

Consumption is billed for a two month period every month.  
 Revenue is based on gallons billed - not cash received.  
 Production is recorded daily.



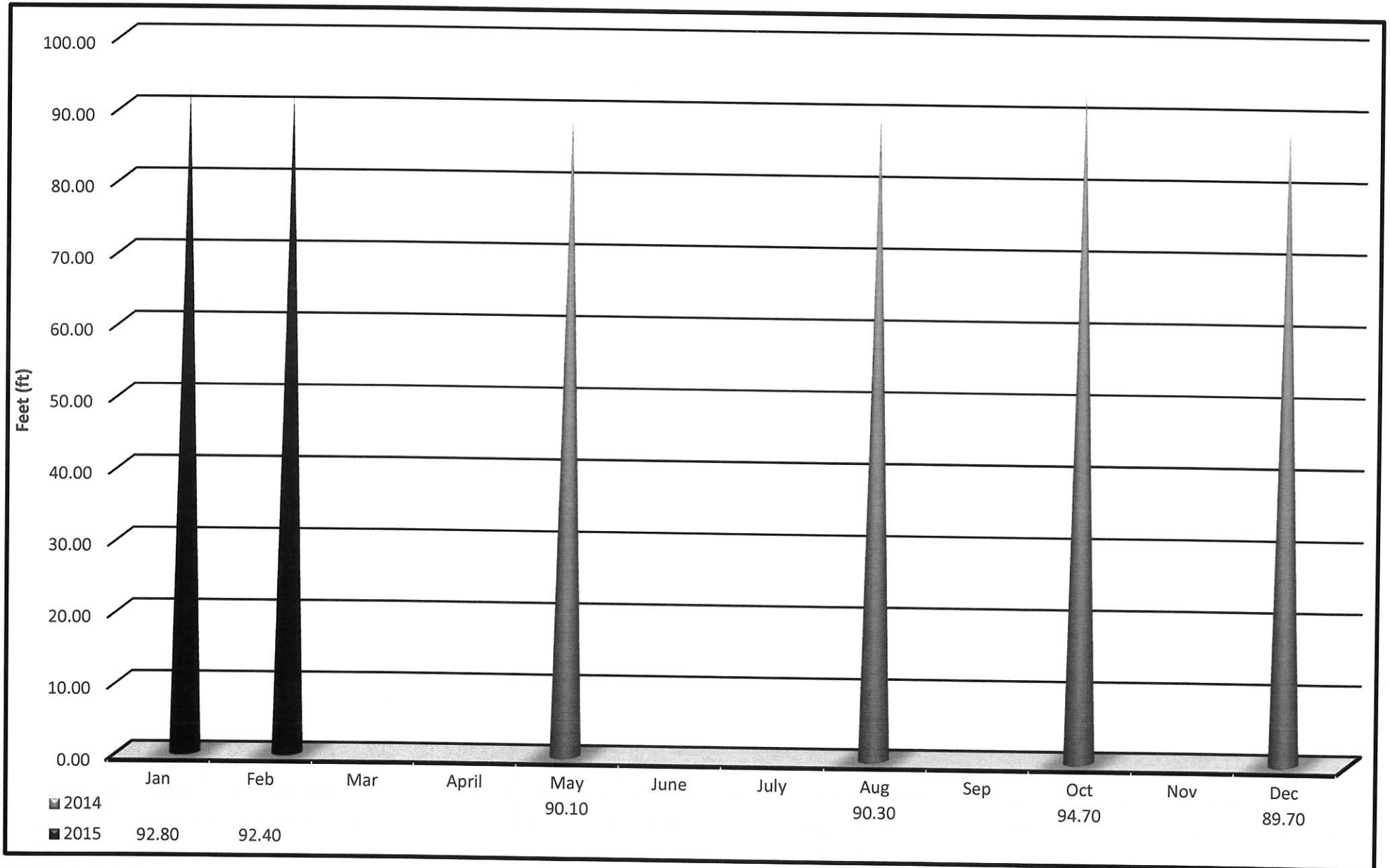








## South Bay Upper Well Static Water Levels

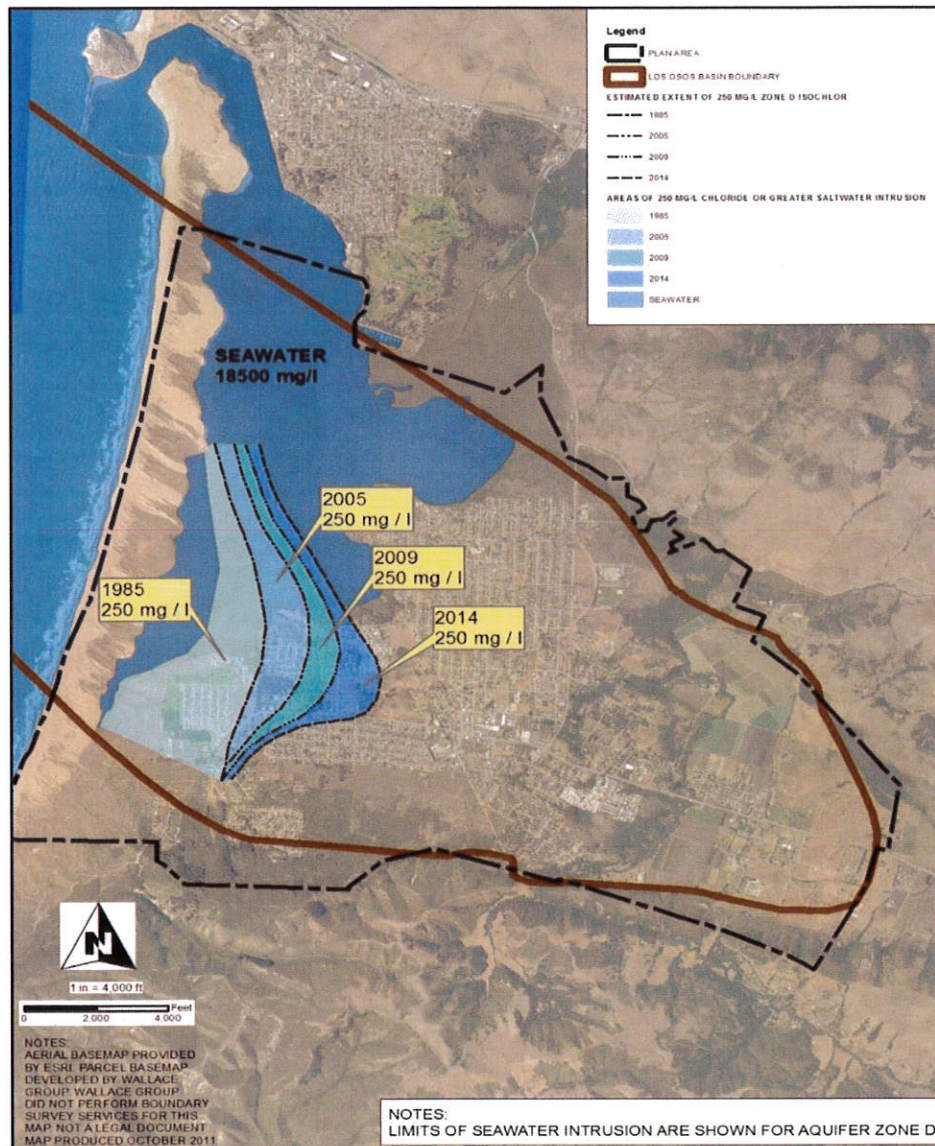




## A MESSAGE ABOUT SEAWATER INTRUSION FROM THE LOS OSOS COMMUNITY SERVICES DISTRICT UTILITIES DEPARTMENT

**Citizens of Los Osos:** Our groundwater aquifer is experiencing seawater intrusion. Groundwater is the only source of drinking water in Los Osos. If the drought continues through April it will likely trigger a Stage 3 Water Shortage, prompting emergency rates and limits on private irrigation with potable water.

The map below shows how the seawater front is progressing in Los Osos. Seawater is denser than fresh water and comes into the lower aquifer under the fresh water. Fresh water floats on top of seawater. To determine if seawater is in our aquifer the district tests the water for chlorides. Those are the numbers represented in the map and measured in milligrams per liter (mg/L). 250 mg/L is acceptable for safe drinking water but an indication that the aquifer is experiencing seawater intrusion.



The first and easiest way to slow down the progress of seawater intrusion is to conserve water.

**The District provides free low-flow water fixtures to use in your homes. Stop by the office between the hours of 9:00 am and 3:00 pm and pick up low-flow shower heads, faucet aerators, and more.**

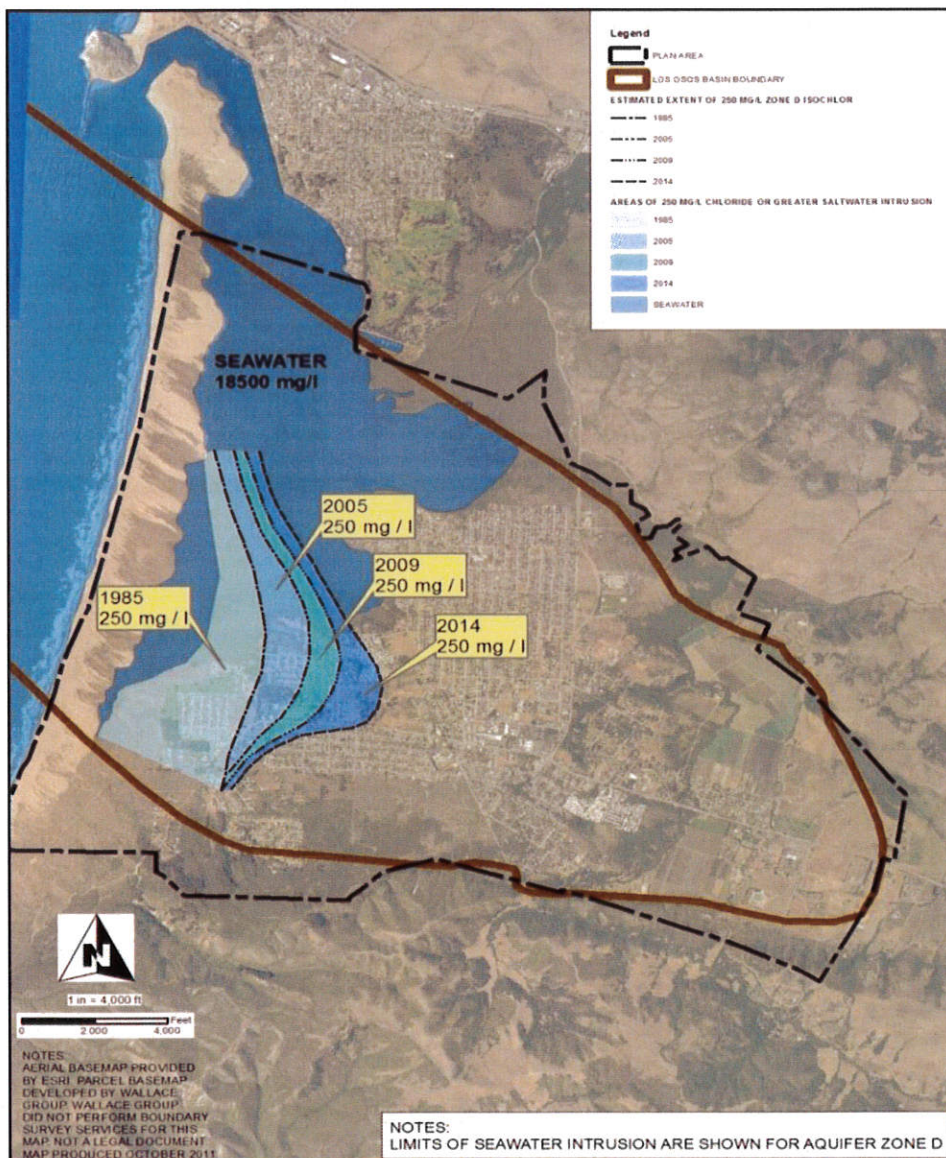
The District thanks the many customers in our water service area who have done all they can to conserve water. Now we're asking everyone to do your part to conserve our precious resource.

## UN MENSAJE SOBRE INTRUSIÓN DE AGUAS NEGRAS

### DEL DEPARTAMENTO DE SERVICIOS COMUNITARIOS Y UTILIDADES DEL DISTRITO DE LOS OSOS

**Ciudadanos de Los Osos:** Nuestro acuífero está experimentando la intrusión de agua marina. El agua subterránea es la única fuente de agua potable en Los Osos. Si la sequía continúa hasta abril es probable que desencadene una escasez de agua Etapa 3, lo que nos llevaría a tasas de emergencia y limitaciones al riego privado con agua potable.

El siguiente mapa muestra cómo el frente de agua de mar está progresando en Los Osos. El agua de mar es más densa que el agua dulce y entra en el acuífero inferior bajo el agua dulce. El agua dulce flota encima del agua de mar. Para determinar si el agua de mar está en nuestro acuífero el distrito pone a prueba el agua para cloruros. Esos son los números representados por el mapa y se miden en miligramos por litro (mg / L). 250 mg / L es la cantidad aceptable para el agua potable pero a la vez indica intrusión del agua marina en el acuífero.



La primer manera y más fácil de frenar el avance de la intrusión de agua de mar es conservando el agua.

**El distrito ofrece instalaciones gratis de accesorios para minimizar el flujo de agua para usar en sus hogares. Pase por la oficina entre las horas de 9:00 am y 3:00 pm y podra recoger cabezas de bajo flujo de ducha, aireadores de grifos y más.**

El Distrito agradece a todos los clientes en el área de servicio de agua que han hecho todo lo posible para conservar el agua. Ahora estamos pidiendo a todos hacer de su parte para conservar nuestro tan preciado recurso.