



June 20, 2014

**TO:** LOCSD Board of Directors

**FROM:** Margaret Falkner, Utility Compliance Technician III

**SUBJECT:** **Agenda Item 9B – 07/03/2014 Board Meeting**  
Utilities Department Report for May 2014

*MFX*

**President**  
Craig V. Baltimore

**Vice President**  
R. Michael Wright

**Directors**  
Leonard A. Moothart  
Marshall E. Ochylski

**General Manager**  
Kathy Kivley

**Temporary District Accountant**  
Michael L. Doyel

**Fire Chief**  
Robert Lewin

**Battalion Chief**  
Phill Veneris

**Mailing Address:**  
P.O. Box 6064  
Los Osos, CA 93412

**Offices:**  
2122 9<sup>th</sup> Street, Suite 102  
Los Osos, CA 93402

**Phone:** 805/528-9370  
**FAX:** 805/528-9377

www.locsd.org

**WATER PRODUCTION**

The total production for the month of **May 2014** was approximately **20.6 million gallons (MG)** this equates to an average daily demand of 664,200 gallons. This represents a **decrease** in production from last year by approximately **7%**.

Fifty-seven percent of the service area received bills for approximately **20.8 MG** consumption for the period **April 11, 2014 through June 12, 2014**. This generated **\$187,230.13** in revenue. This represents approximately an **8 %** decrease in consumption and approximately a **9%** increase in revenue when compared to last year at this time.

**PRODUCTION AND RUNTIME HOURS BY WELL SITE**

Below are two tables that break down the production by well site and the runtime on the pump motor for the month of May 2014. Last year's totals are included for comparison:

<b>Production (MG) May</b>	<b>2014</b>	<b>2013</b>
Palisades	7.3720	8.4030
3rd Street	3.1523	3.1188
El Moro	4.7107	4.3112
10th Street	4.3586	4.5046
South Bay (lower)	0.9969	1.9725
South Bay (upper)	0.0000	0.0000
<b>TOTAL:</b>	<b>20.5905</b>	<b>22.3101</b>

<b>Runtime (Hours) May</b>	<b>2014</b>	<b>2013</b>
Palisades	217.0	233.8
3rd St	715.4	726.0
El Moro	225.0	202.1
10th St	230.8	248.9
South Bay (lower)	735.4	737.4
South Bay (upper)	0.0	0.0
<b>TOTAL:</b>	<b>2123.6</b>	<b>2148.2</b>

Please note that crews were directed and have scaled back the runtime hours at Palisades beginning June 6, 2014. Those hours will be reflected on next month's report.

Please refer to the attached May 2014 "Well Log Summary" for more data regarding production, runtime hours, chemical usage, soundings, and alarms.

## **CALIFORNIA STATE OF EMERGENCY DUE TO DROUGHT**

On January 17, 2014, Governor Brown declared an emergency due to drought. He has called on all Californians to restrain water use. Attached to this report are graphs with tables which provide information on the District's water well depths.

## **WATER CONSERVATION**

Staff attended the Baywood Park Farmer's Market on Santa Maria Avenue on June 16, 2014. Weekly water conservation messages continue to be placed on the Rotary electronic message board at the corner of South Bay Blvd. and L.O.V.R. A marketing firm was selected to lead the water conservation plan outreach program. Staff and the District Engineer will be meeting with marketing firm. Staff met with representatives from Toro regarding their free water conserving sprinkler program. Staff also attended the CUWCC meeting held in San Luis Obispo to introduce the free water conserving sprinkler program.

## **PUBLIC DRAFT INTEGRATED REGIONAL WATER MANAGEMENT (IRWM) PLAN 2014**

A Public Draft IRWM Plan was released on June 6, 2014, and is available for public comment until July 7, 2014. Utilities department staff has been reviewing the North Coast Subregion information and parts of the entire documents for the past year and one-half. The LOCSO has a link from the home page to the document. Here is the link also for your reference: <http://www.slocountywater.org/site/Frequent%20Downloads/Integrated%20Regional%20Water%20Management%20Plan/IRWM%20Plan%20Update%202014/>

## **UTILITIES DEPARTMENT OPERATIONS AND MAINTENANCE FOR WATER SYSTEM**

During the month of May 2014, crew provided weekly water sampling for water permit compliance, read water meters for billing, and performed monthly well soundings. Staff submitted the monthly monitoring report to the California Department of Public Health (CDPH) for May 2014 with no violations noted.

## **DRAINAGE WID # 3 40M2000133**

The General National Pollutant Discharge Elimination System (NPDES) Permit for storm water discharges for small Municipal Separate Storm Sewer Systems (MS4) is effective July 1, 2013. District staff has been working with staff at the Regional Water Quality Control Board on the current permit.

## **BAYRIDGE ESTATES WID# 3 401027001**

Crews continue monitoring and groundskeeping. Once connected to the Los Osos Wastewater Project, the District crews will no longer maintain the septic system.

## **VISTA DE ORO WID# 3 401024001**

Crews continue monitoring and groundskeeping. Once connected to the Los Osos Wastewater Project, the District crews will no longer maintain the septic system.

## **SURPLUS OFFICE FURNITURE**

On May 12, 2014, staff coordinated a surplus office furniture removal. The owner of our office building and other tenants were notified that a roll-off would be in the driveway that morning. Meathead movers were hired to remove surplus office furniture that was not being used and/or was a safety hazard. The fire department inspected the upstairs suite and informed the District that items had to be moved to comply with fire safety standards. We are now in compliance.

## **BENCHMARKING ENERGY AUDIT**

The District was approached by the San Luis Obispo County Planning Department in cooperation with both PG&E and Southern California Gas to see if we would be interested in and energy audit to reduce our energy costs. Staff was eager to find savings especially at our water well pumping facilities. An agreement was signed by the General Manager allowing access to our energy billings

for the benchmark program. Four electric accounts were targeted and rate schedule changes were made. The **annual savings** based on last year's usage are as follows:

Fund 301	237.79
Fund 200	249.31
Fund 500 (two well sites)	4255.73
<b>TOTAL ANNUAL SAVINGS</b>	<b><u>\$4,742.83</u></b>

For more information see Assembly Bill 1103 at <http://www.energy.ca.gov/ab1103/>.

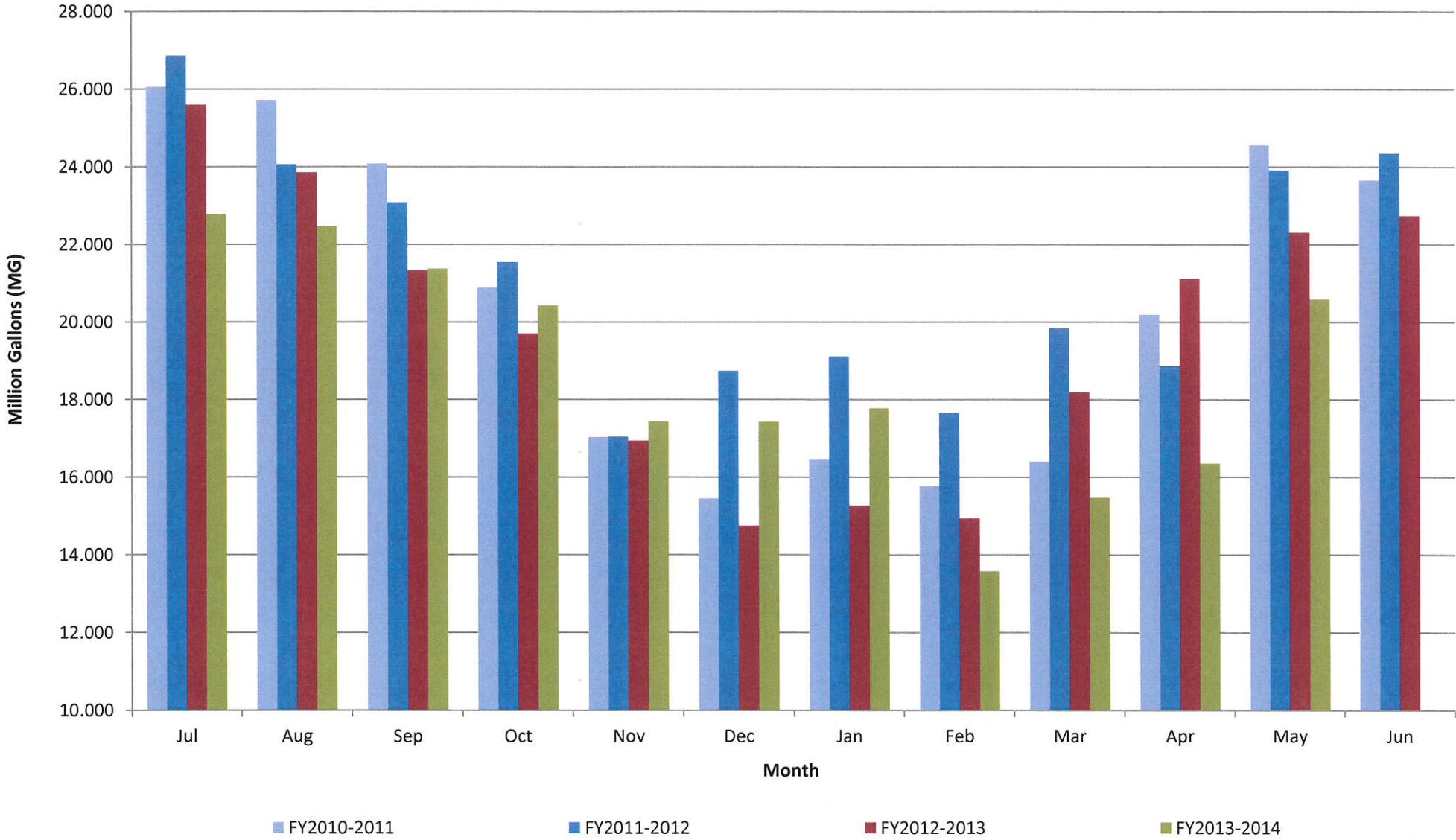
**RECOMMENDATION**

Staff encourages the Board to ask any questions they may have with regard to the aforementioned report or any other related item that may be listed separately as an agenda item.

Attachments

<b>MAY 2014</b>	8th St./ EI Moro Well	3rd St./ Bayside Well	10th St. Well	South Bay Well	South Bay Upper Well	Palisades Well	All Wells TOTAL	Last Years TOTAL	Percent% Differential
Total Gallons Produced, Mgal	4.7107	3.1523	4.3586	0.9969	0.0000	7.3720	20.5905	22.3101	-7.71%
Average Daily Flow, Mgal							0.6642		
Total Gallons to Waste (Filter Backwash), Mgal	0.0367			0.0000	0.0000		0.0367	0.0000	
Total Gallons to Waste (System Flushing), Mgal							0.0000	0.0000	
Distribution System Losses (Water Line Breaks), Mgal							0.0000	0.4100	
Total Gallons Adjusted, Mgal	4.6740			0.9969			20.5538	21.9001	-6.15%
Pump Runtime, Total Hours	225.0	715.4	230.8	735.4		217.0	2123.6	2147.9	-1.14%
Daily Avg. Runtime, Hours/Day	7.3	23.1	7.4	23.7		7.0			
Energy Used, kWatts	8989	5701	10245	7676		16911	49522	51504	-3.85%
Eff. Ratio, kWatts/hr	39.95	7.97	44.39	10.44		77.93			
Chlorine Used, Total Gallons	63.5	41.4	27.0	20.8		74.9	227.5	211.5	7.56%
Aqua Mag, Pounds	58.2		52.0	0.0		62.0	172.2	76.8	124.22%
Static water level, ft.	39.40	7.70	162.90	126.00	90.10	109.85			
Pump water level, ft.	148.25	64.00	245.80	159.00	0.00	266.65			
Draw-down level, ft.	108.85	56.30	82.90	33.00	0.00	156.80	South Bay	Upper Well	Out of Service
Gallons per minute	363	74	352	0	0	552			
Pressure, psi	96	83	35	62	0	82			
<b>Alarm Events</b>									
YES / NO	YES	YES	NO	NO	NO	NO			
<b>Type of event</b>									
Well Failure							0		
Power Failure							0		
Low Chlorine		1					1		
Other:	1	1					2		
<b>Total number alarms</b>	1	2	0	0	0	0	3	4	-25.00%

# Historical to Present LOCS D Well Production Data



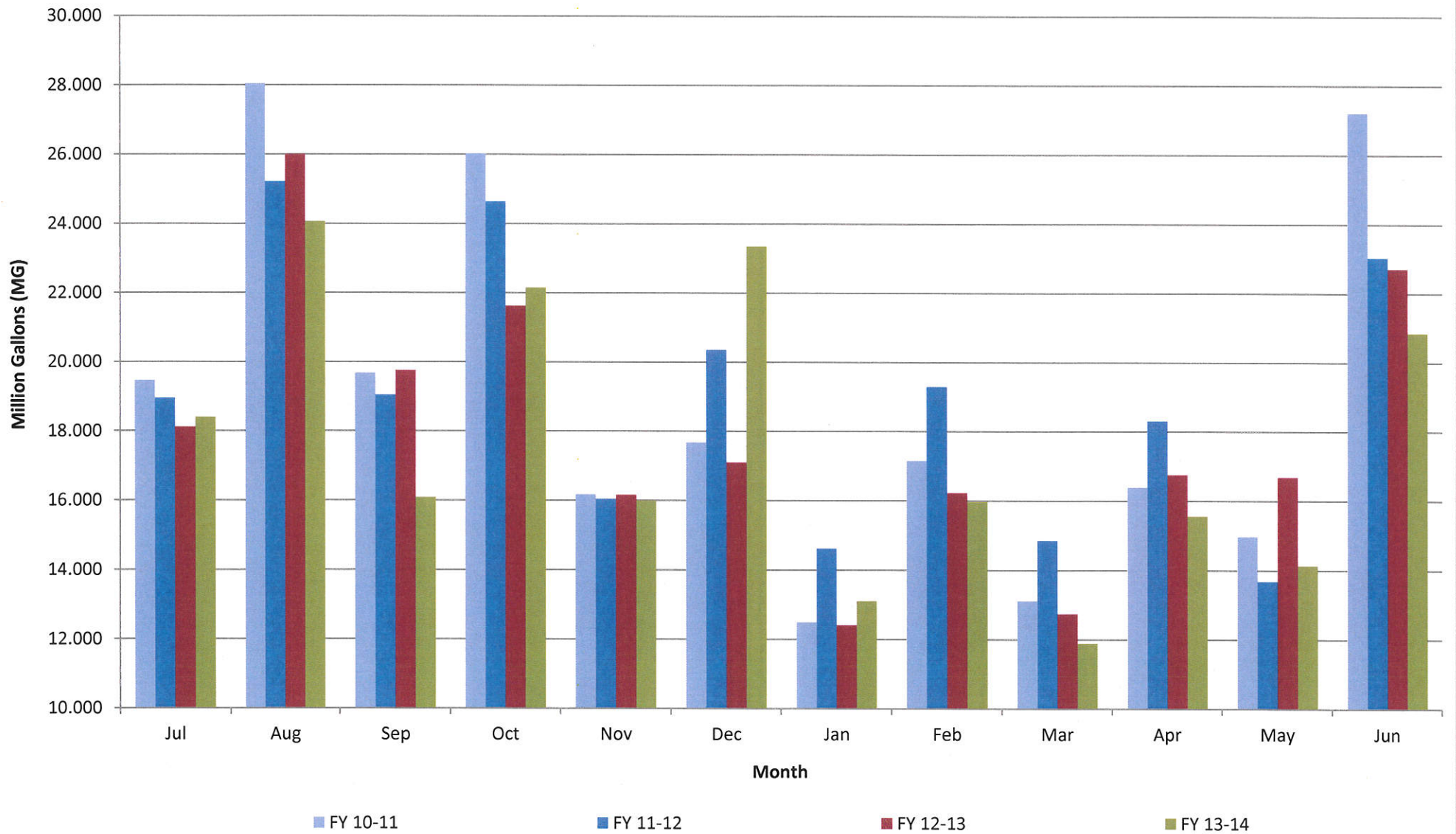
## LOCS D Water Data

### Water Production Data in Million Gallons

	FY 10-11	FY 11-12	FY 12-13	FY 13-14
Jul	26.066	26.868	25.600	22.779
Aug	25.724	24.064	23.862	22.470
Sep	24.087	23.086	21.340	21.380
Oct	20.895	21.543	19.708	20.431
Nov	17.042	17.046	16.939	17.436
Dec	15.460	18.745	14.747	17.431
Jan	16.463	19.117	15.268	17.780
Feb	15.783	17.662	14.940	13.584
Mar	16.402	19.843	18.193	15.476
Apr	20.195	18.873	21.118	16.354
May	24.563	23.914	22.310	20.591
Jun	23.660	24.347	22.743	
<b>TOTAL</b>	<b>246.338</b>	<b>255.107</b>	<b>236.767</b>	<b>205.712</b>

Consumption is billed for a two month period every month.  
Revenue is based on gallons billed - not cash received.  
Production is recorded daily.

## Historical to Present LOCSD Water Consumption



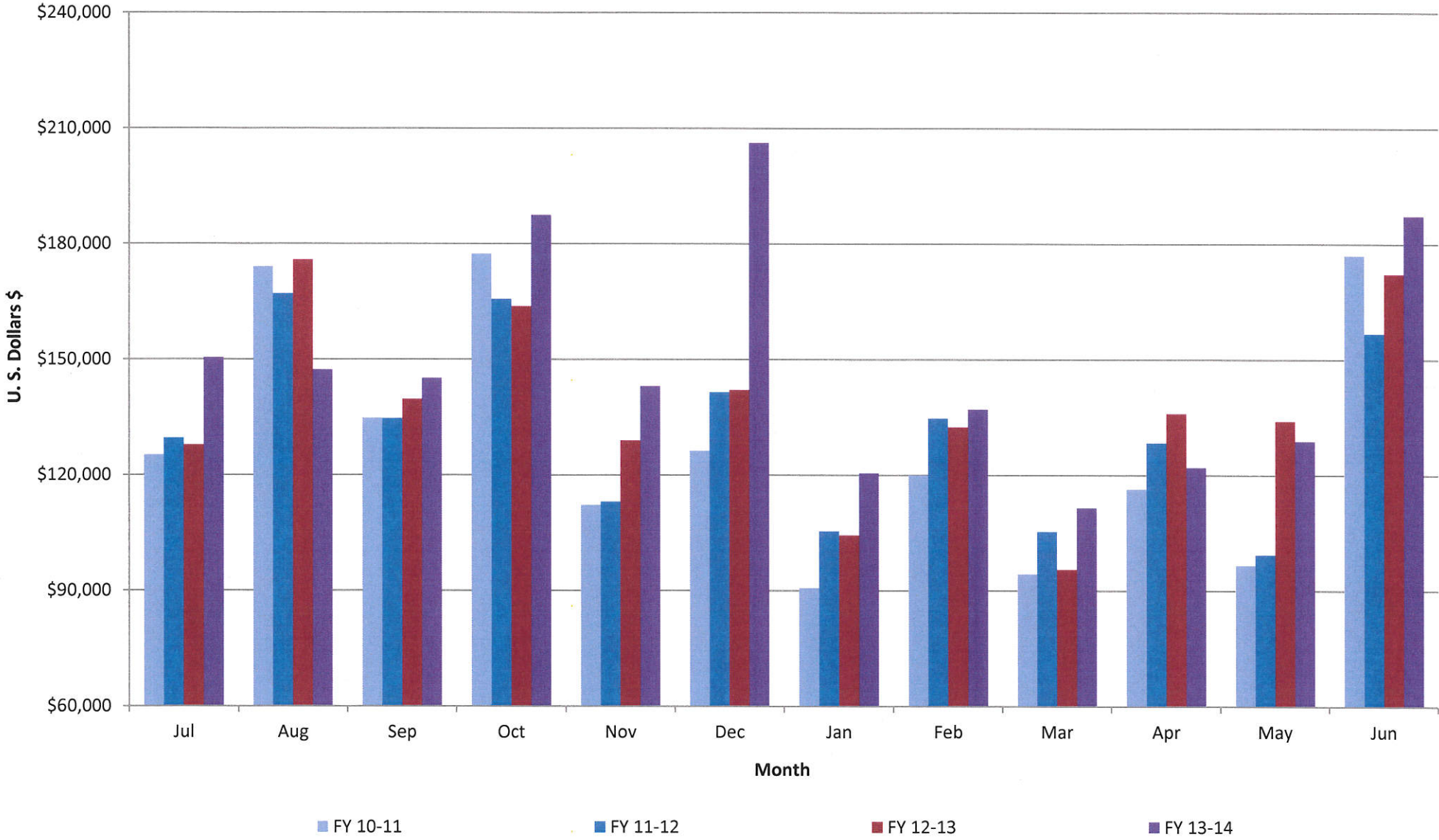
## LOCSD Water Data

Water Consumption Data in Million Gallons						
% of Service Area	Billing Period		FY 10-11	FY 11-12	FY 12-13	FY 13-14
43	5/11 to 7/10	Jul	19.463	18.950	18.110	18.402
57	6/11 to 8/10	Aug	28.050	25.210	26.006	24.061
43	7/11 to 9/10	Sep	19.674	19.044	19.748	16.087
57	8/11 to 10/10	Oct	26.027	24.636	21.617	22.142
43	9/11 to 11/10	Nov	16.179	16.048	16.155	15.994
57	10/11 to 12/10	Dec	17.683	20.355	17.096	23.342
43	11/11 to 1/10	Jan	12.485	14.623	12.406	13.105
57	12/11 to 2/10	Feb	17.161	19.294	16.223	15.969
43	1/11 to 3/10	Mar	13.109	14.858	12.737	11.886
57	2/11 to 4/10	Apr	16.396	18.313	16.756	15.559
43	3/11 to 5/10	May	14.975	13.685	16.686	14.131
57	4/11 to 6/10	Jun	27.212	23.029	22.709	20.852
		<b>TOTAL</b>	<b>228.414</b>	<b>228.044</b>	<b>216.249</b>	<b>211.530</b>

Consumption is billed for a two month period every month.  
 Revenue is based on gallons billed - not cash received.  
 Production is recorded daily.



# Historical to Present LOCS Water Revenue

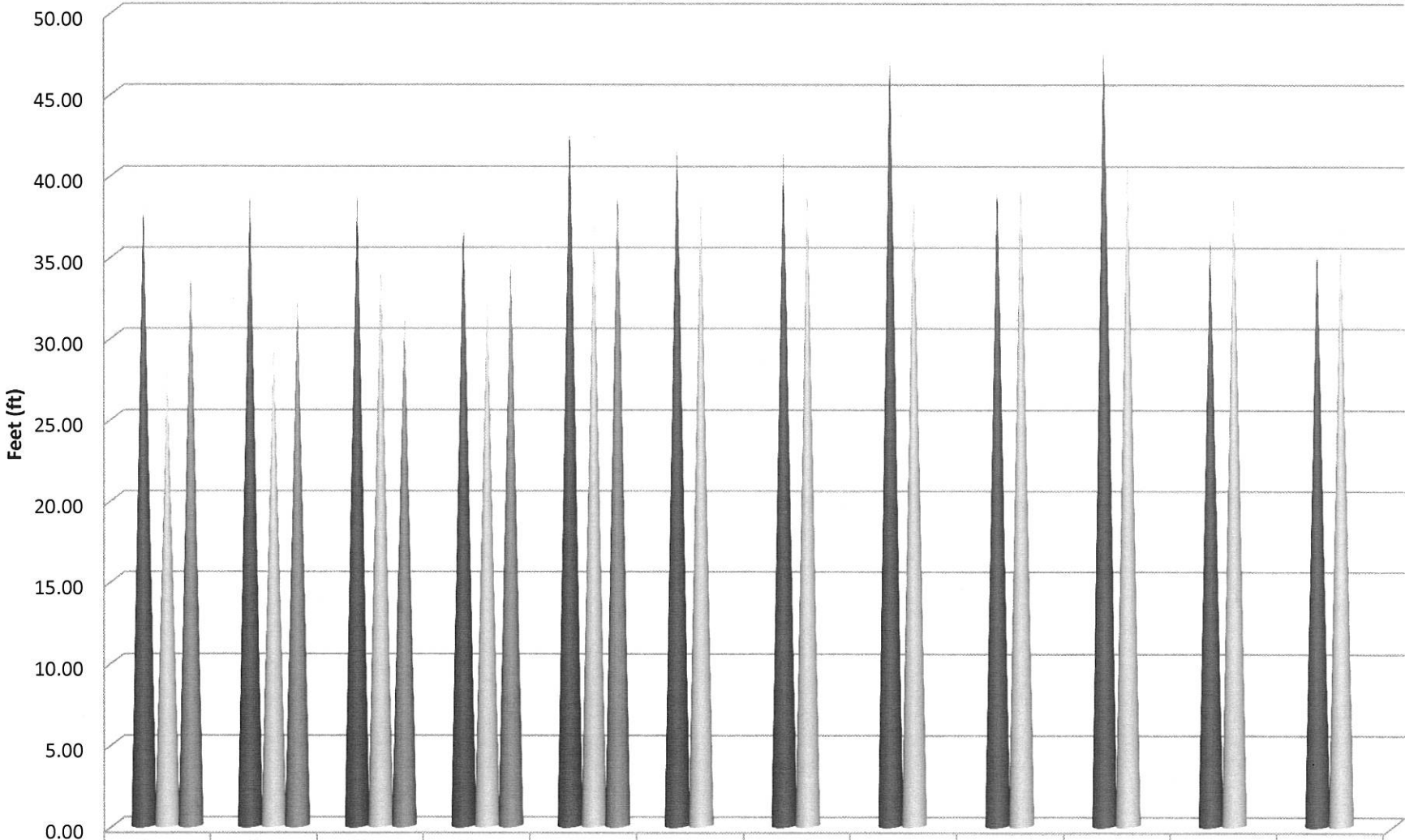


## LOCSD Water Data

Water Revenue Data						
% of Service Area	Billing Period		FY 10-11	FY 11-12	FY 12-13	FY 13-14
43	5/11 to 7/10	Jul	\$125,133.24	\$129,524.46	\$127,737.70	\$150,401.90
57	6/11 to 8/10	Aug	\$174,057.07	\$167,062.07	\$175,798.70	\$147,246.54
43	7/11 to 9/10	Sep	\$134,756.85	\$134,650.62	\$139,628.43	\$145,135.28
57	8/11 to 10/10	Oct	\$177,362.45	\$165,624.63	\$163,698.98	\$187,431.78
43	9/11 to 11/10	Nov	\$112,171.55	\$113,044.46	\$128,918.55	\$143,029.03
57	10/11 to 12/10	Dec	\$126,236.55	\$141,492.06	\$142,026.32	\$206,187.91
43	11/11 to 1/10	Jan	\$90,676.15	\$105,371.44	\$104,328.08	\$120,500.40
57	12/11 to 2/10	Feb	\$119,946.90	\$134,692.14	\$132,433.64	\$137,045.65
43	1/11 to 3/10	Mar	\$94,298.10	\$105,313.67	\$95,487.96	\$111,475.31
57	2/11 to 4/10	Apr	\$116,335.40	\$128,368.97	\$135,947.81	\$121,943.68
43	3/11 to 5/10	May	\$96,549.67	\$99,287.66	\$133,939.00	\$128,784.61
57	4/11 to 6/10	Jun	\$177,009.32	\$156,744.35	\$172,139.37	\$187,230.13
		<b>TOTAL</b>	<b>\$1,544,533.25</b>	<b>\$1,581,176.53</b>	<b>\$1,652,084.54</b>	<b>\$1,786,412.22</b>

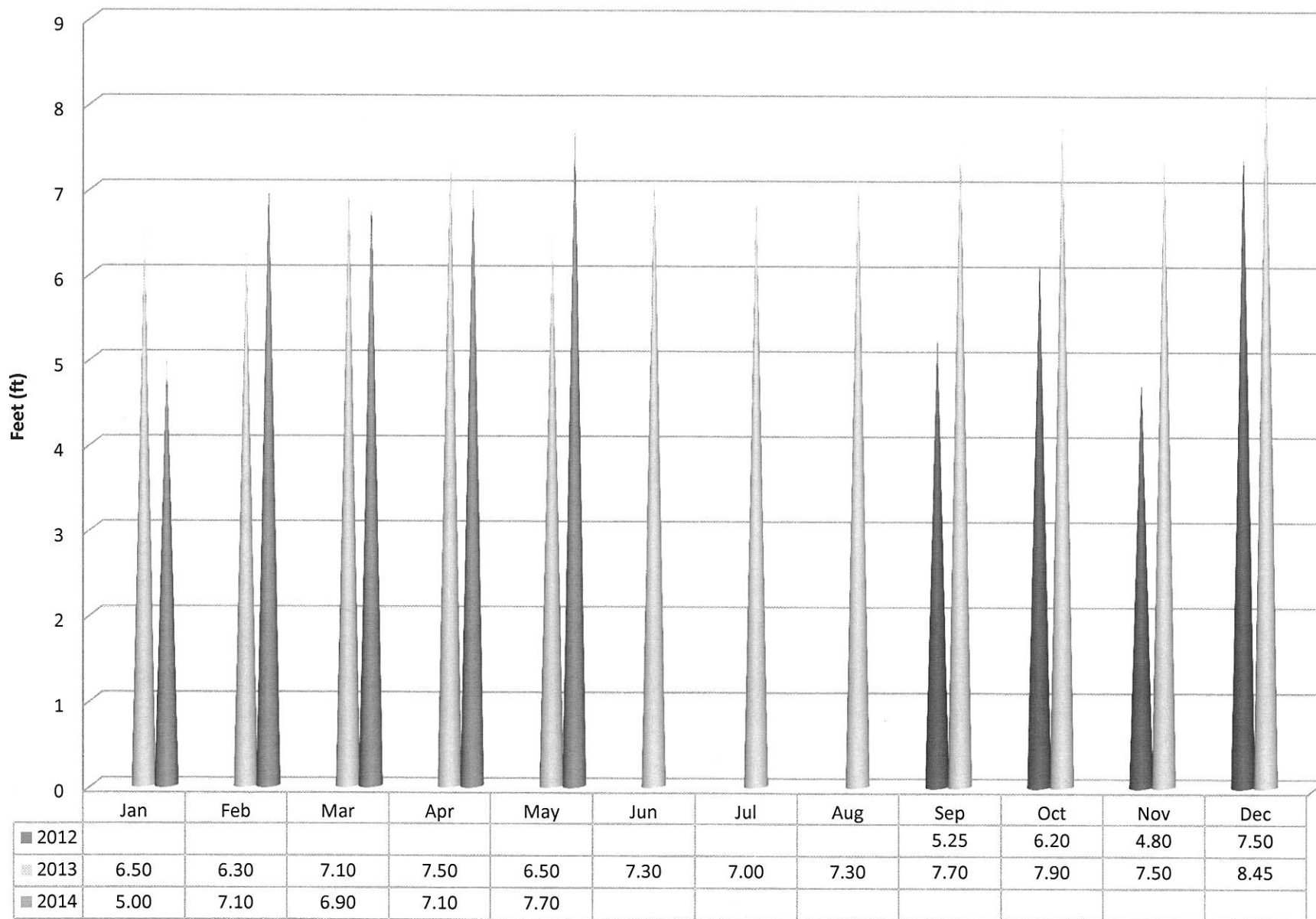
Consumption is billed for a two month period every month.  
 Revenue is based on gallons billed - not cash received.  
 Production is recorded daily.

# 8th Street Well Static Water Levels

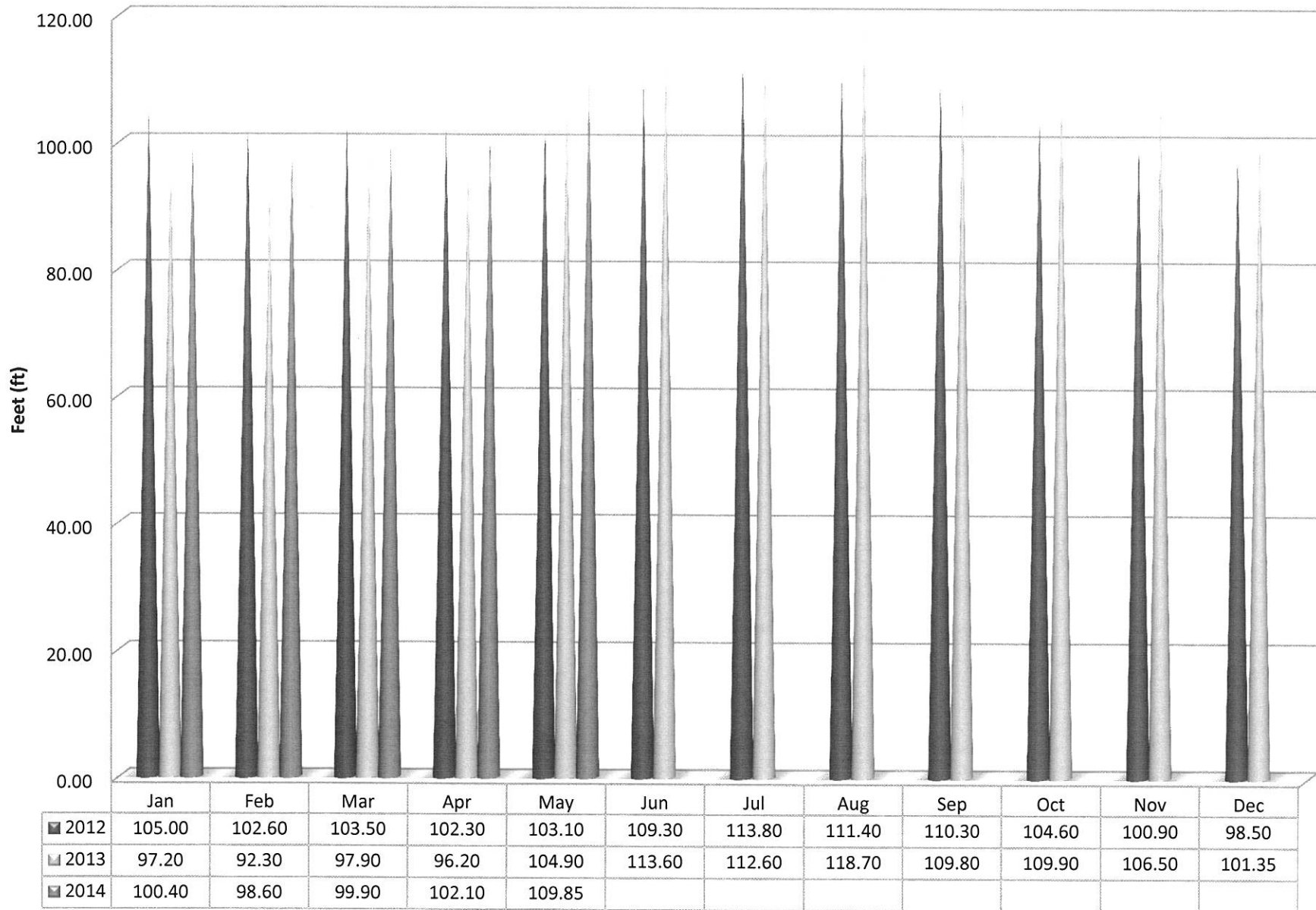


	Jan	Feb	Mar	Apr	May	Jun	Jul	Aug	Sep	Oct	Nov	Dec
■ 2012	38.40	38.90	38.90	37.20	43.45	41.90	41.40	47.60	39.70	48.10	36.20	35.80
■ 2013	28.00	29.80	34.80	32.50	37.20	39.00	39.80	39.80	41.10	41.30	39.50	37.00
■ 2014	34.20	32.50	31.30	35.10	39.40							

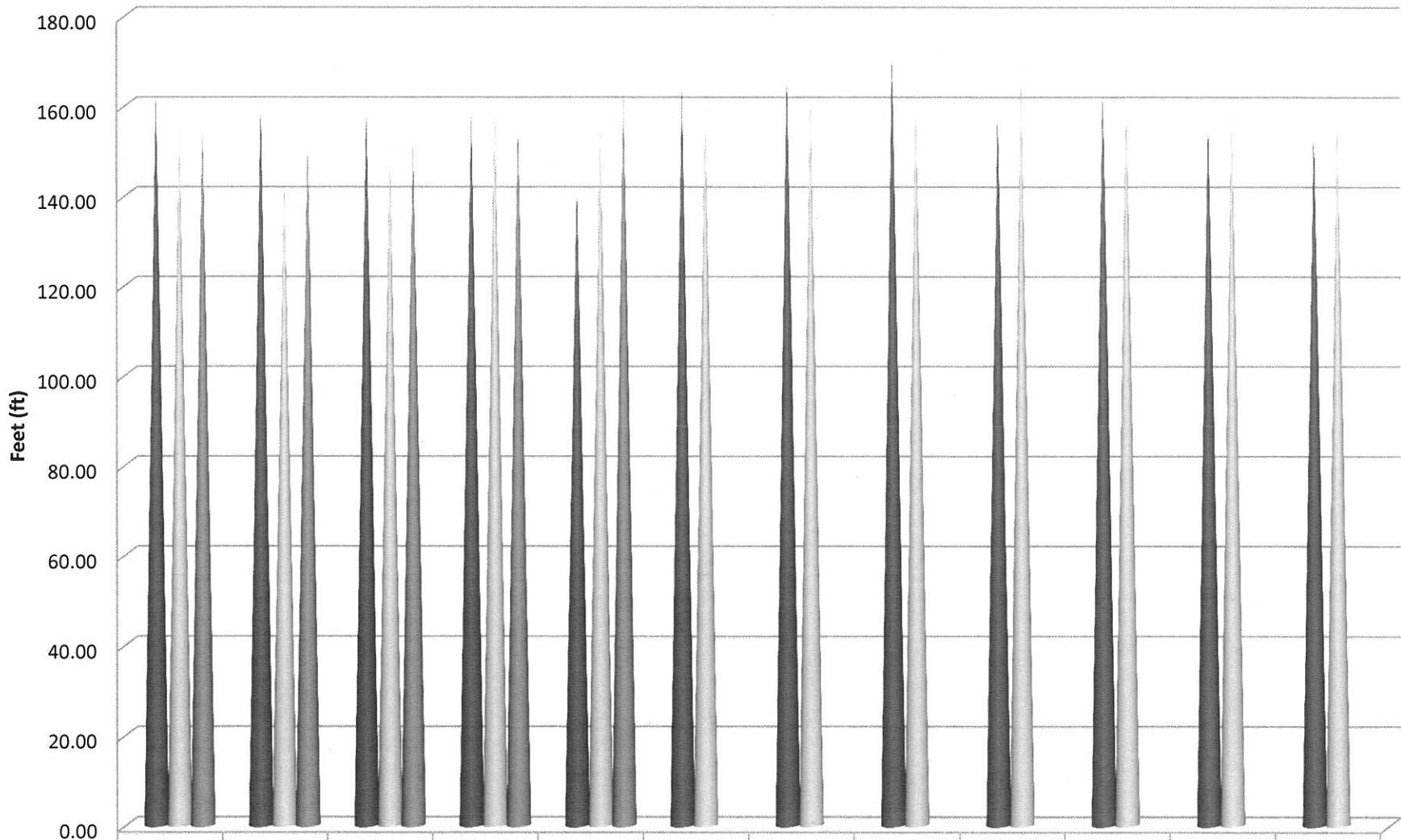
### 3rd Street Well Static Water Levels



## Palisades Well Static Water Levels

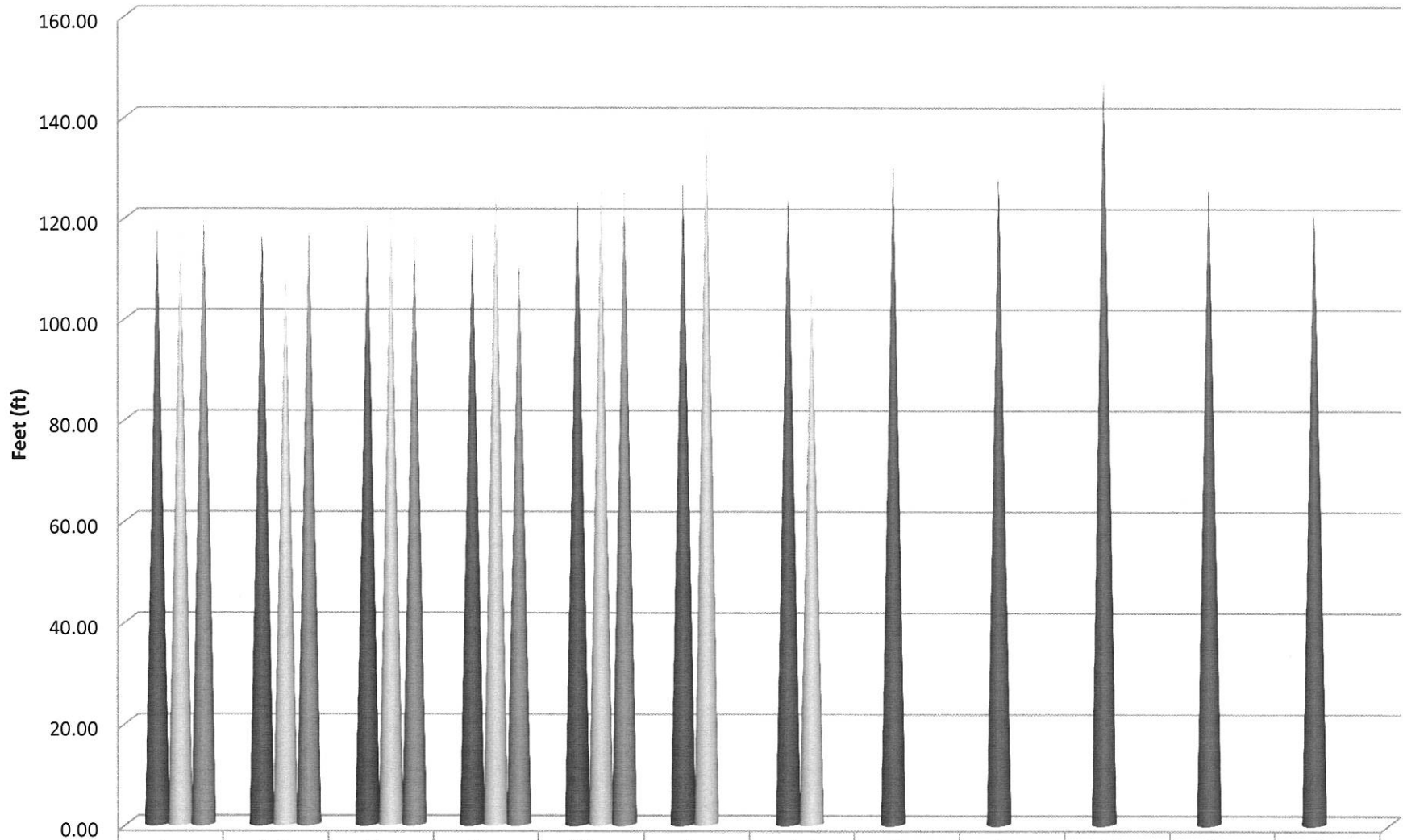


## 10th Street Well Static Water Levels



	Jan	Feb	Mar	Apr	May	Jun	Jul	Aug	Sep	Oct	Nov	Dec
■ 2012	162.85	160.60	159.90	158.80	142.50	163.50	168.00	171.90	158.80	164.60	157.40	154.60
■ 2013	157.00	144.90	152.90	161.60	156.80	161.30	163.90	164.80	168.40	164.30	161.20	157.45
■ 2014	156.20	152.40	152.60	156.80	162.90							

## South Bay Lower Well Static Water Levels



	Jan	Feb	Mar	Apr	May	Jun	Jul	Aug	Sep	Oct	Nov	Dec
■ 2012	118.60	118.20	120.30	117.10	125.70	127.10	126.20	131.20	129.70	149.60	129.00	122.60
■ 2013	117.25	109.90	121.60	127.60	127.50	139.00	108.60					
■ 2014	122.10	118.90	116.80	112.90	126.00							