



January 23, 2015

TO: LOCSD Board of Directors
FROM: Margaret Falkner, Utility Compliance Technician III
SUBJECT: **Agenda Item 9B – 02/05/2015 Board Meeting**
 Utilities Department Report for December 2014

President
 R. Michael Wright

Vice President
 Marshall E. Ochylski

Directors
 Charles L. Cesena
 Jon-Erik G. Storm
 Louis G. Tornatzky

General Manager
 Kathy A. Kivley

District Accountant
 Michael L. Doyel

Fire Chief
 Robert Lewin

Battalion Chief
 Phill Veneris

Mailing Address:
 P.O. Box 6064
 Los Osos, CA 93412

Offices:
 2122 9th Street, Suite 102
 Los Osos, CA 93402

Phone: 805/528-9370
FAX: 805/528-9377

www.locsd.org

WATER PRODUCTION

The total production for the month of **December 2014** was approximately **12.7 million gallons (MG)** this equates to an average daily demand of 411,600 gallons. This represents a **decrease** in production from last year by approximately **27%**.

Forty-three percent of the service area received bills for approximately **9.8 MG** consumption for the period **November 12, 2014 through January 12, 2015**. This generated **\$99,970** in revenue. This represents a decrease in consumption by approximately **25%** and a decrease in revenue by approximately **17%** when compared to last year. Graphs and tables are attached.

PRODUCTION AND RUNTIME HOURS BY WELL SITE

Below are two tables that break down the production by well site and the runtime on the pump motor for the month of December 2014. Last year's totals are included for comparison:

Production (MG) December	2014	2013
Palisades	1.1730	6.2070
3rd Street	3.1717	3.1821
El Moro	4.0718	4.3685
10th Street	3.8949	3.2397
South Bay (lower)	0.4478	0.4341
South Bay (upper)	0.0000	0.0000
TOTAL:	12.7592	17.4314

Runtime (Hours) December	2014	2013
Palisades	35.0	180.5
3rd St	718.2	731.1
El Moro	198.5	199.7
10th St	204.4	172.2
South Bay (lower)	157.9	300.6
South Bay (upper)	0.0	0.0
TOTAL:	1314.0	1584.1

Please refer to the attached December 2014 "Well Log Summary" for more data regarding production, runtime hours, chemical usage, soundings, and alarms.

CALIFORNIA STATE OF EMERGENCY DUE TO DROUGHT

On January 17, 2014, Governor Brown declared an emergency due to drought. He has called on all Californians to restrain water use. Attached to this report are graphs with tables which provide information on the District's water well depths. ***We remain officially in a drought.***

WATER CONSERVATION

The District entered into a contract with Barnett, Cox & Associates in July 2014 for public relations for water conservation. The costs charged to the District through December 31, 2014 are \$6,020.75. This leaves a balance of \$11,800.25 remaining on their contract.

Here is a list of the deliverables provided by Barnett, Cox & Associates:

Save Los Osos Water Social Media Set Up and Maintenance, Channel 20 Slide, Sea Water Intrusion Release, Basin Plan Release, Los Osos Chamber Guide Ad, LOCSO Agency Services, We Can Bear It Posters, Save Los Osos Water Splash Page, and Conservation Campaign Results Release.

There are links from the LOCSO website main page to the new Save Los Osos Water Splash Page. If you click on the Save Los Osos Water icon on our main page you will be directed to the following site: <http://www.savelosososwater.org/>



"Together We Can Bear It: Save Los Osos Water"

Here is a link to the new Save Los Osos Water Facebook Page:

<https://www.facebook.com/SaveLosOsosWater>

Customers in the District's water service area are encouraged to stop by the office during lobby hours, 9:00 am until 3:00 pm, and pick up water conservation fixtures. We have 1.5 gallons per minute (gpm) high efficiency showerhead with on/off valve; 1.5 gpm kitchen sink swivel aerator; packets of leak detection dye tablets for toilet tanks; a drip gauge cylinder to measure small drips; and a water saving garden hose nozzle. Also available to our customers is a five minute shower timer. Pick one up and challenge yourself to see if you can get a complete shower within five minutes.

A water conservation banner is being displayed on the northwest corner of Los Olivos Avenue and South Bay Boulevard. Messages continue to be displayed on the Rotary sign at the corner of Los Osos Valley Road and South Bay Boulevard.

SAN LUIS OBISPO COUNTY WATER CONSERVATION REBATE PROGRAM

All Los Osos residents that will be connected to the Los Osos Wastewater Project may qualify for rebates on plumbing fixtures. The District web site has a link to the County's rebate web site. Here is a link to the County's web site which has information for residents in the prohibition zone. <http://conservelososos.org/>

UTILITIES DEPARTMENT OPERATIONS AND MAINTENANCE FOR WATER SYSTEM

During the month of December 2014, crew provided weekly water sampling for water permit compliance, read water meters for billing, and performed monthly well soundings. In addition to their regular schedule, crews repaired a mainline break in the 1700 block of 10th Street that was caused by tree roots. Crews continued work on the meter replacement program, and fire hydrant maintenance.

Staff submitted the monthly monitoring report to the State Water Resource Control Board Drinking Water Division for December 2014 with no violations noted.

DRAINAGE WDID # 3 40M2000133

The District complies with the General National Pollutant Discharge Elimination System (NPDES) Permit for storm water discharges for small Municipal Separate Storm Sewer Systems (MS4). Under the new permit, all Community Services Districts are considered "Non-traditional" MS4s.

The Los Osos CSD is a member of the Central Coast Partners for Water Quality. The goal of the Partners is to implement municipal stormwater programs consistent with the state. We participate in public education campaigns and other municipal stormwater components. When you see the logo below, recognize the Los Osos CSD is a member.



Pet waste pollutes our waterways and ocean. It contributes to the closure of beaches when there are high bacteria levels that may be harmful to humans. The latest outreach campaign from the Partners is "SLO Scoops Poop –every stinkin' time". The District has a link to the website from both the main page and the drainage page.

We encourage citizens of Los Osos to go to <http://sloscoopspoop.com/> and take the pledge to pick up after their animals. Once you have taken the pledge, come to the District office between the hours of 9:00 am and 3:00 pm, provide proof of your pledge, and receive a bandana for your dog. Look for the following logo:



Crews prepared before the storms by cleaning drain inlets and performed maintenance on the pumps. Utility crews measured **4.93" of rain in December**. This brings our calendar **year total to 12.51"** of rain. Rainfall is measured at the water operations facility on 8th Street and El Moro Avenue. The office and Fire department staff sold 1,166 sand bags in December for a total of \$524.70 in sales. Sand is provided for free to the public at the Utilities Operations facility on 8th & El Moro Avenue and the CAL FIRE Station 15-South Bay on Bayview Heights Drive.

BAYRIDGE ESTATES WDID# 3 401027001

Crews continue monitoring and grounds keeping at this facility. In December, Al's Septic was called out to vacuum out a few manholes. Once connected to the Los Osos Wastewater Project, the District crews will no longer maintain the septic system.

VISTA DE ORO WDID# 3 401024001

Crews continue monitoring and grounds keeping at this facility. Once connected to the Los Osos Wastewater Project, the District crews will no longer maintain the septic system.

RECOMMENDATION

Staff encourages the Board to ask any questions they may have with regard to the aforementioned report or any other related item that may be listed separately as an agenda item.

Attachments

DECEMBER 2014	8th St./ EI Moro Well	3rd St./ Bayside Well	10th St. Well	South Bay Well	South Bay Upper Well	Palisades Well	All Wells TOTAL	Last Years TOTAL	Percent% Differential
Total Gallons Produced, Mgal	4.0718	3.1717	3.8949	0.4478	0.0000	1.1730	12.7592	17.4314	-26.80%
Average Daily Flow, Mgal							0.4116		
Total Gallons to Waste (Filter Backwash), Mgal	0.0566			0.0000	0.0000		0.0566	0.0707	
Total Gallons to Waste (System Flushing), Mgal							0.0000	0	
Distribution System Losses (Water Line Breaks), Mgal							0.0015	0.0015	
Total Gallons Adjusted, Mgal	4.0152			0.4478			12.7011	17.3592	-26.83%
Pump Runtime, total hours	198.5	718.2	204.4	157.9		35.0	1314.0	1584.1	-20.56%
Daily Avg. Runtime, hours/day	6.4	23.2	6.6	5.1		1.1			
Energy Used, kWatts	7864	5699	9149	1950		2730	27392	37811	-27.56%
Eff. Ratio, kWatts/hr	39.62	7.94	44.76	12.35		78.00			
Chlorine Used, total gallons	64.6	38.9	23.7	10.2		11.2	148.6	189.5	-21.60%
Aqua Mag, pounds	56.6		40.6	0.0		8.2	105.4	153.9	-31.51%
Static water level, ft.	30.80	6.50	113.80	111.30	89.70	94.00			
Pump water level, ft.	137.80	56.10	247.80	172.00	0.00	0.00	South Bay Upper Well & Palisades Well out of service.		
Draw-down level, ft.	107.00	49.60	134.00	60.70	0.00	0.00			
Gallons per minute	344	73	345	61	0	0			
Pressure, psi	98	80	37	62	0	0			
Alarm Events									
YES / NO	NO	YES	YES	NO	NO	YES			
Type of event									
Well Failure							0		
Power Failure							0		
Low Chlorine						2	2		
Other:		2	3			7	12		
Total number alarms	0	2	3	0	0	9	14	5	180.00%

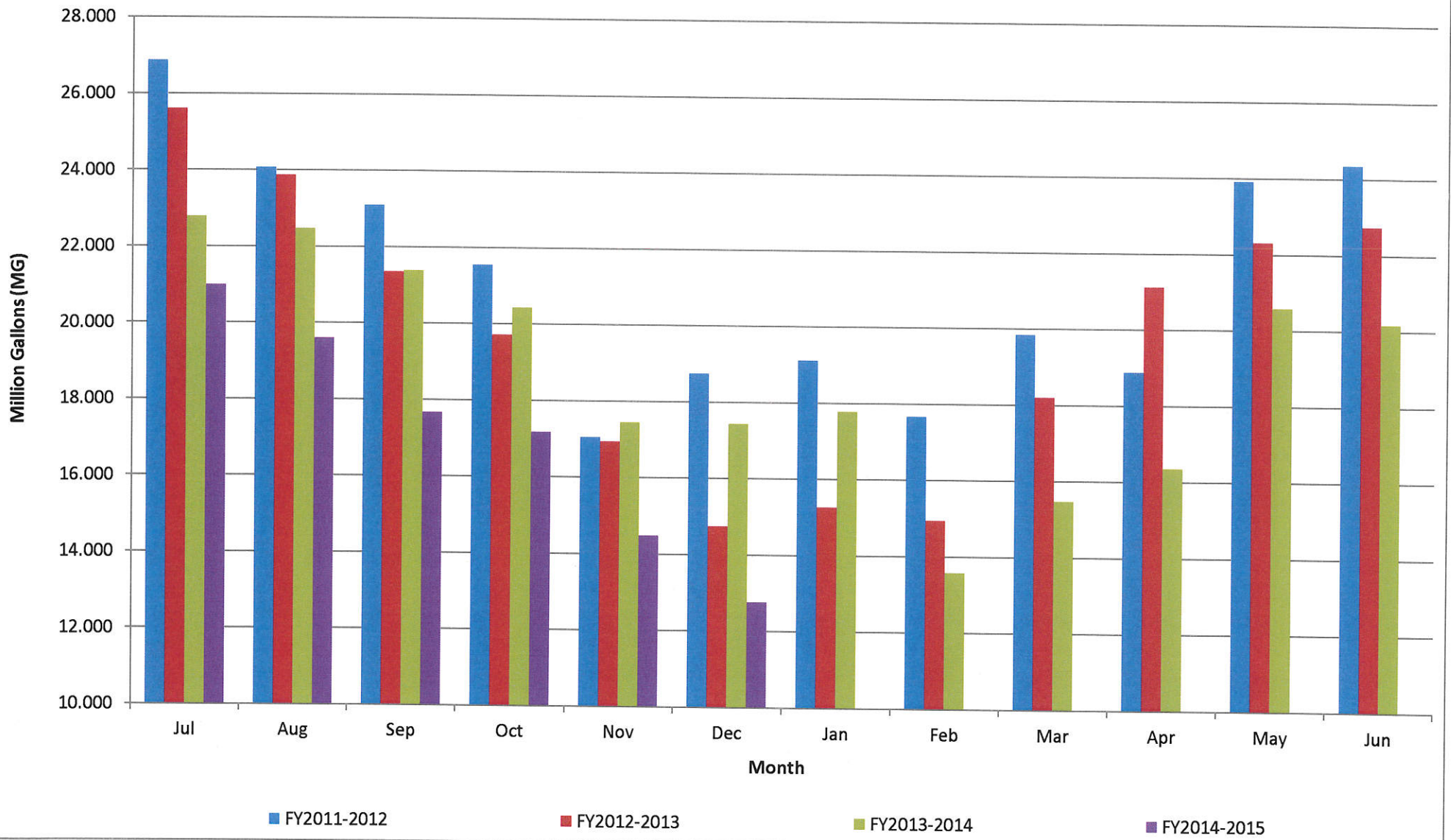
LOCSD Water Data

Water Production Data in Million Gallons

	FY 11-12	FY 12-13	FY 13-14	FY 14-15
Jul	26.868	25.600	22.779	20.979
Aug	24.064	23.862	22.470	19.593
Sep	23.086	21.340	21.380	17.668
Oct	21.543	19.708	20.431	17.169
Nov	17.046	16.939	17.436	14.482
Dec	18.745	14.747	17.431	12.759
Jan	19.117	15.268	17.780	
Feb	17.662	14.940	13.584	
Mar	19.843	18.193	15.476	
Apr	18.873	21.118	16.354	
May	23.914	22.310	20.591	
Jun	24.347	22.743	20.179	
TOTAL	255.107	236.767	225.890	102.651

Consumption is billed for a two month period every month.
Revenue is based on gallons billed - not cash received.
Production is recorded daily.

Historical to Present LOCS D Well Production Data

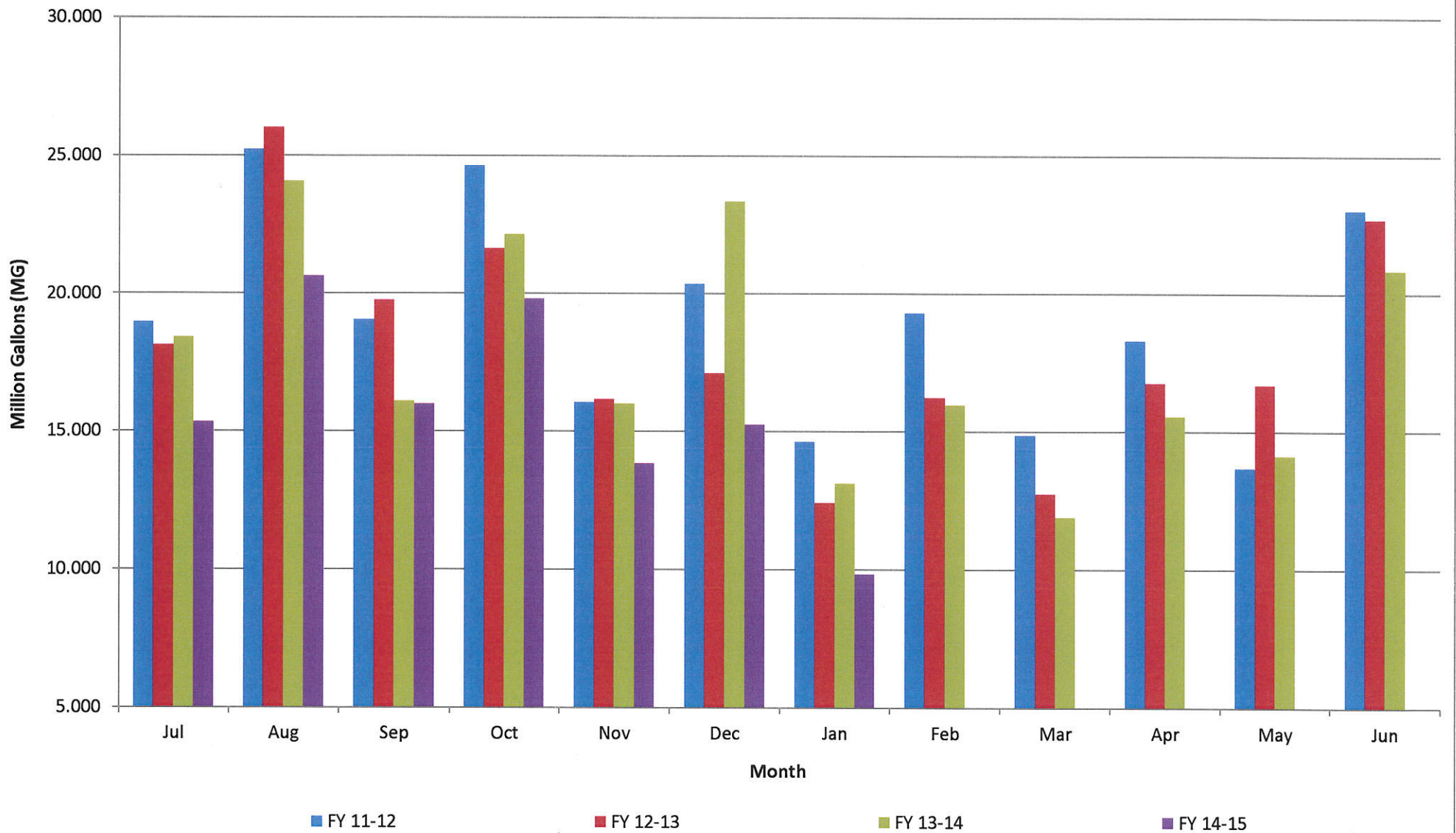


LOCSD Water Data

Water Consumption Data in Million Gallons						
% of Service Area	Billing Period		FY 11-12	FY 12-13	FY 13-14	FY 14-15
43	5/11 to 7/10	Jul	18.950	18.110	18.402	15.330
57	6/11 to 8/10	Aug	25.210	26.006	24.061	20.627
43	7/11 to 9/10	Sep	19.044	19.748	16.087	15.989
57	8/11 to 10/10	Oct	24.636	21.617	22.142	19.804
43	9/11 to 11/10	Nov	16.048	16.155	15.994	13.830
57	10/11 to 12/10	Dec	20.355	17.096	23.342	15.236
43	11/11 to 1/10	Jan	14.623	12.406	13.105	9.828
57	12/11 to 2/10	Feb	19.294	16.223	15.969	
43	1/11 to 3/10	Mar	14.858	12.737	11.886	
57	2/11 to 4/10	Apr	18.313	16.756	15.559	
43	3/11 to 5/10	May	13.685	16.686	14.131	
57	4/11 to 6/10	Jun	23.029	22.709	20.852	
		TOTAL	228.044	216.249	211.530	110.644

Consumption is billed for a two month period every month.
 Revenue is based on gallons billed - not cash received.
 Production is recorded daily.

Historical to Present LOCSD Water Consumption

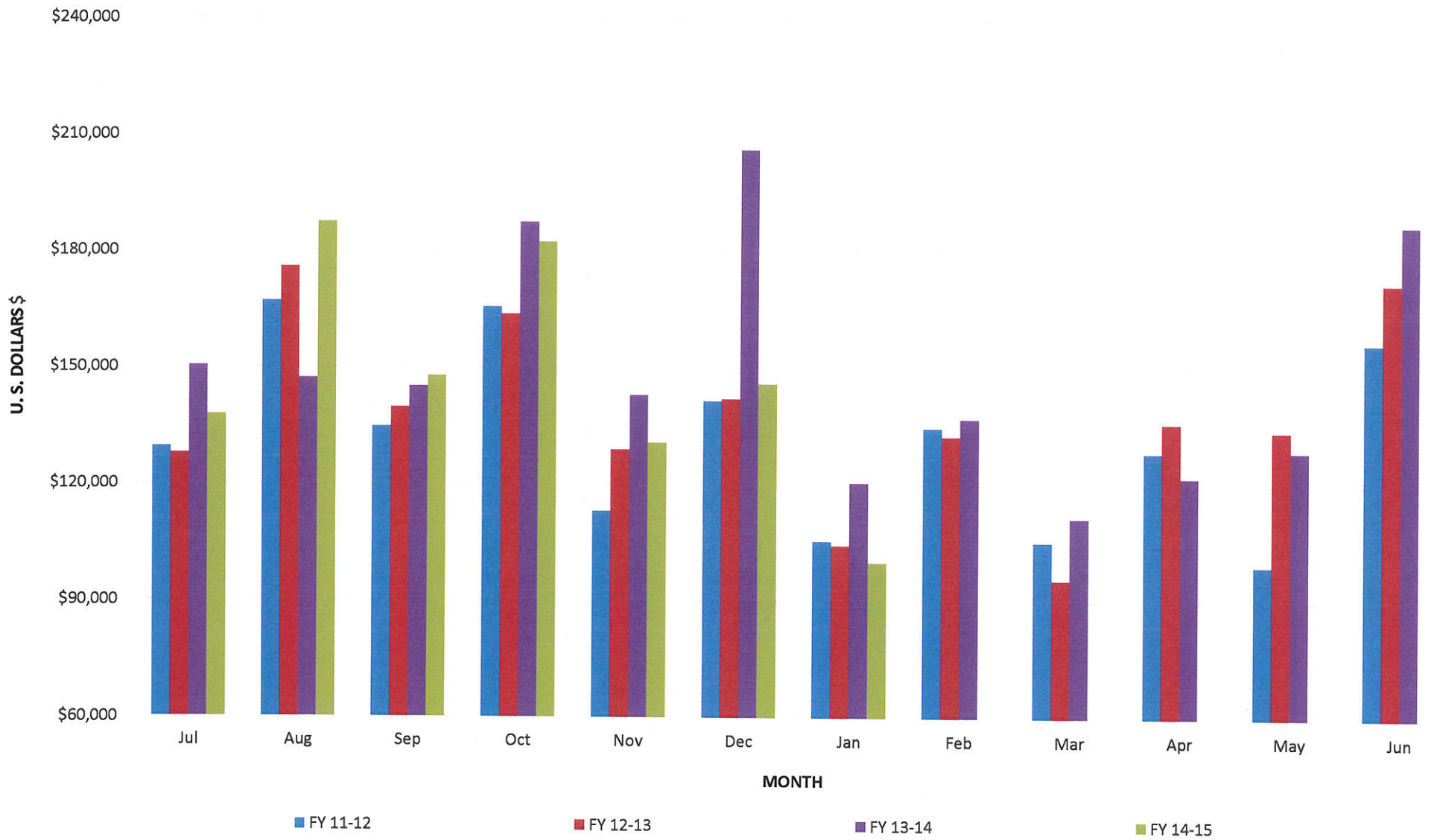


LOCSD Water Data

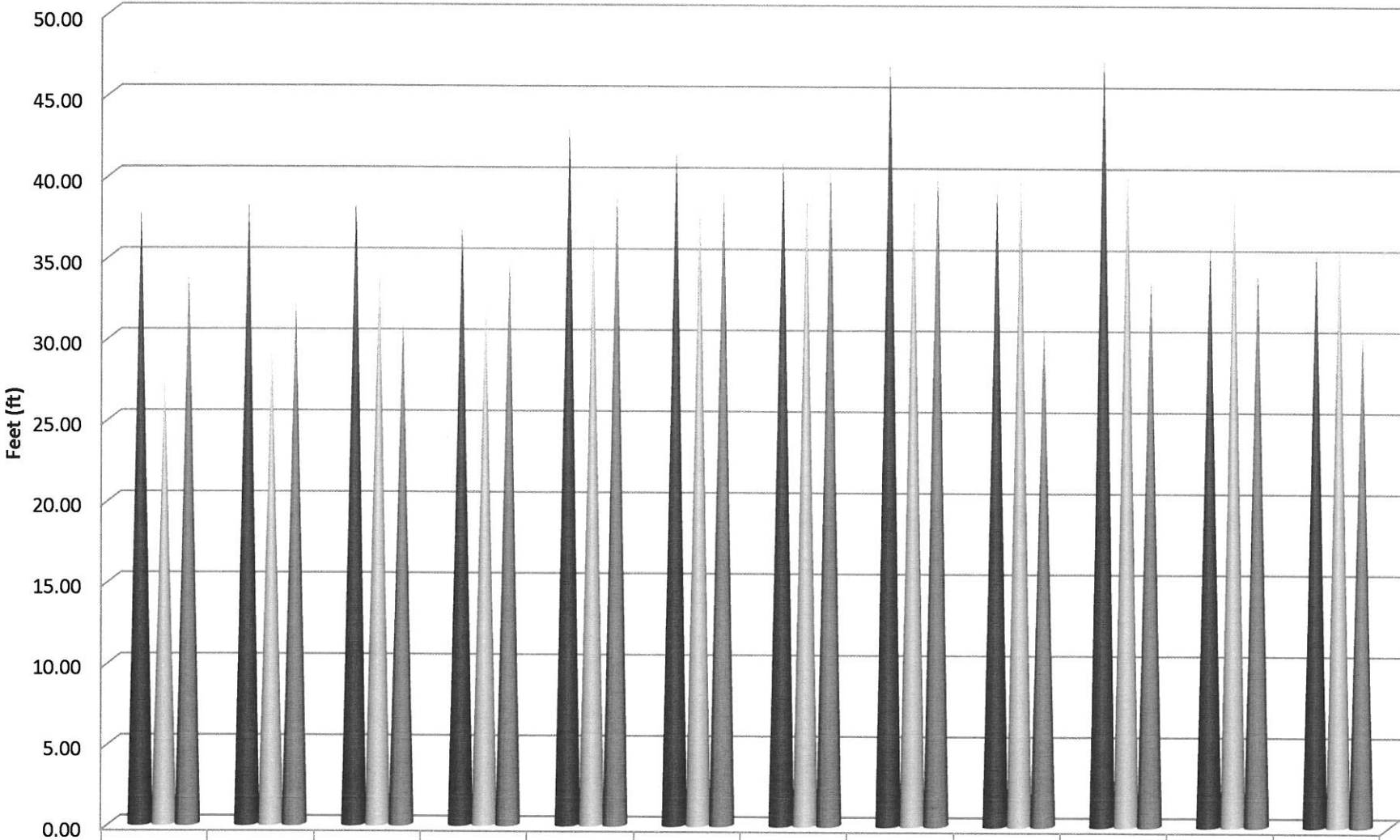
Water Revenue Data						
% of Service Area	Billing Period		FY 11-12	FY 12-13	FY 13-14	FY 14-15
43	5/11 to 7/10	Jul	\$129,524.46	\$127,737.70	\$150,401.90	\$137,752.98
57	6/11 to 8/10	Aug	\$167,062.07	\$175,798.70	\$147,246.54	\$187,468.02
43	7/11 to 9/10	Sep	\$134,650.62	\$139,628.43	\$145,135.28	\$147,808.06
57	8/11 to 10/10	Oct	\$165,624.63	\$163,698.98	\$187,431.78	\$182,463.96
43	9/11 to 11/10	Nov	\$113,044.46	\$128,918.55	\$143,029.03	\$130,772.31
57	10/11 to 12/10	Dec	\$141,492.06	\$142,026.32	\$206,187.91	\$145,977.27
43	11/11 to 1/10	Jan	\$105,371.44	\$104,328.08	\$120,500.40	\$99,970.19
57	12/11 to 2/10	Feb	\$134,692.14	\$132,433.64	\$137,045.65	
43	1/11 to 3/10	Mar	\$105,313.67	\$95,487.96	\$111,475.31	
57	2/11 to 4/10	Apr	\$128,368.97	\$135,947.81	\$121,943.68	
43	3/11 to 5/10	May	\$99,287.66	\$133,939.00	\$128,784.61	
57	4/11 to 6/10	Jun	\$156,744.35	\$172,139.37	\$187,230.13	
		TOTAL	\$1,581,176.53	\$1,652,084.54	\$1,786,412.22	\$1,032,212.79

Consumption is billed for a two month period every month.
 Revenue is based on gallons billed - not cash received.
 Production is recorded daily.

Historical to Present LOCS Water Revenue

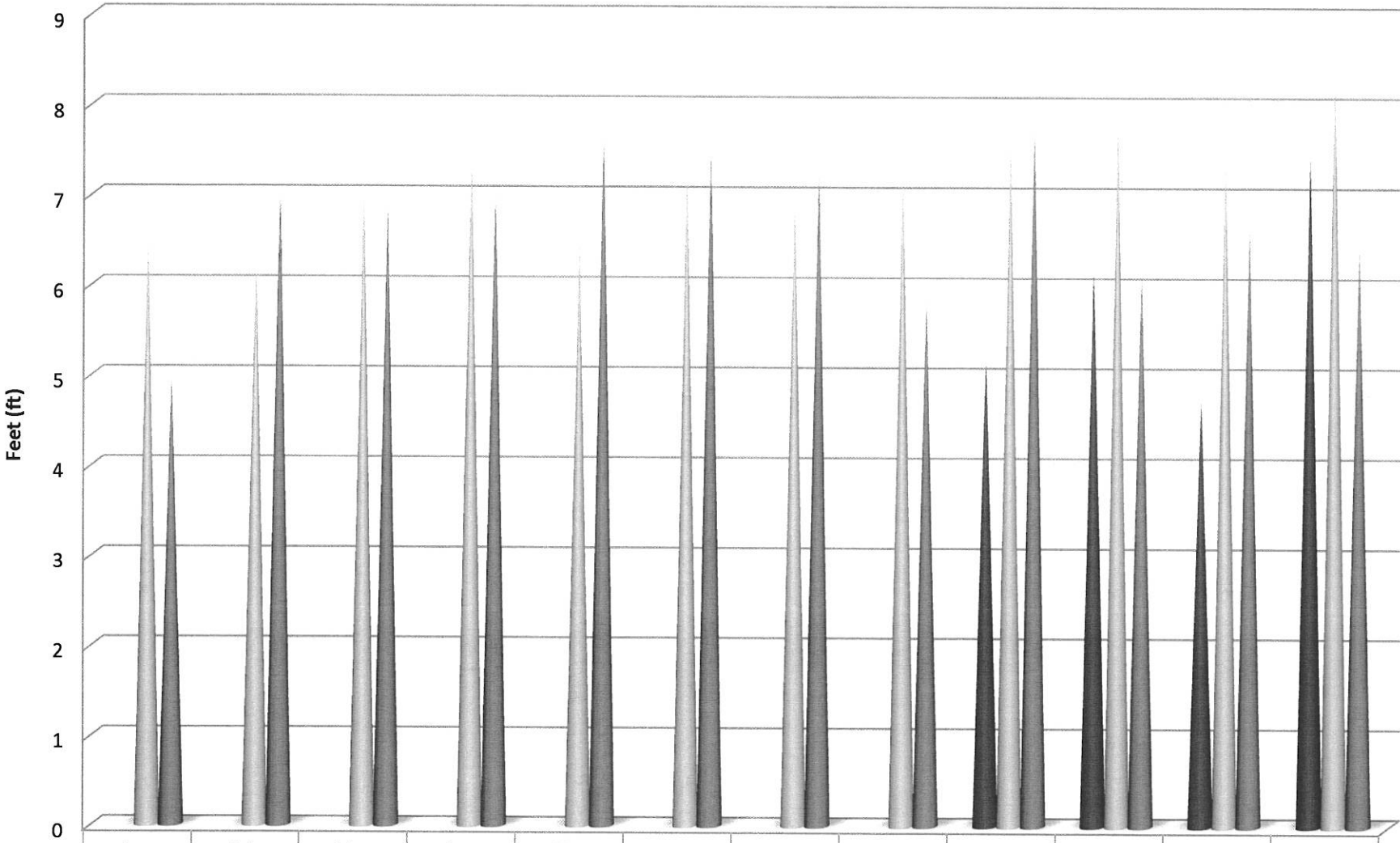


8th Street Well Static Water Levels



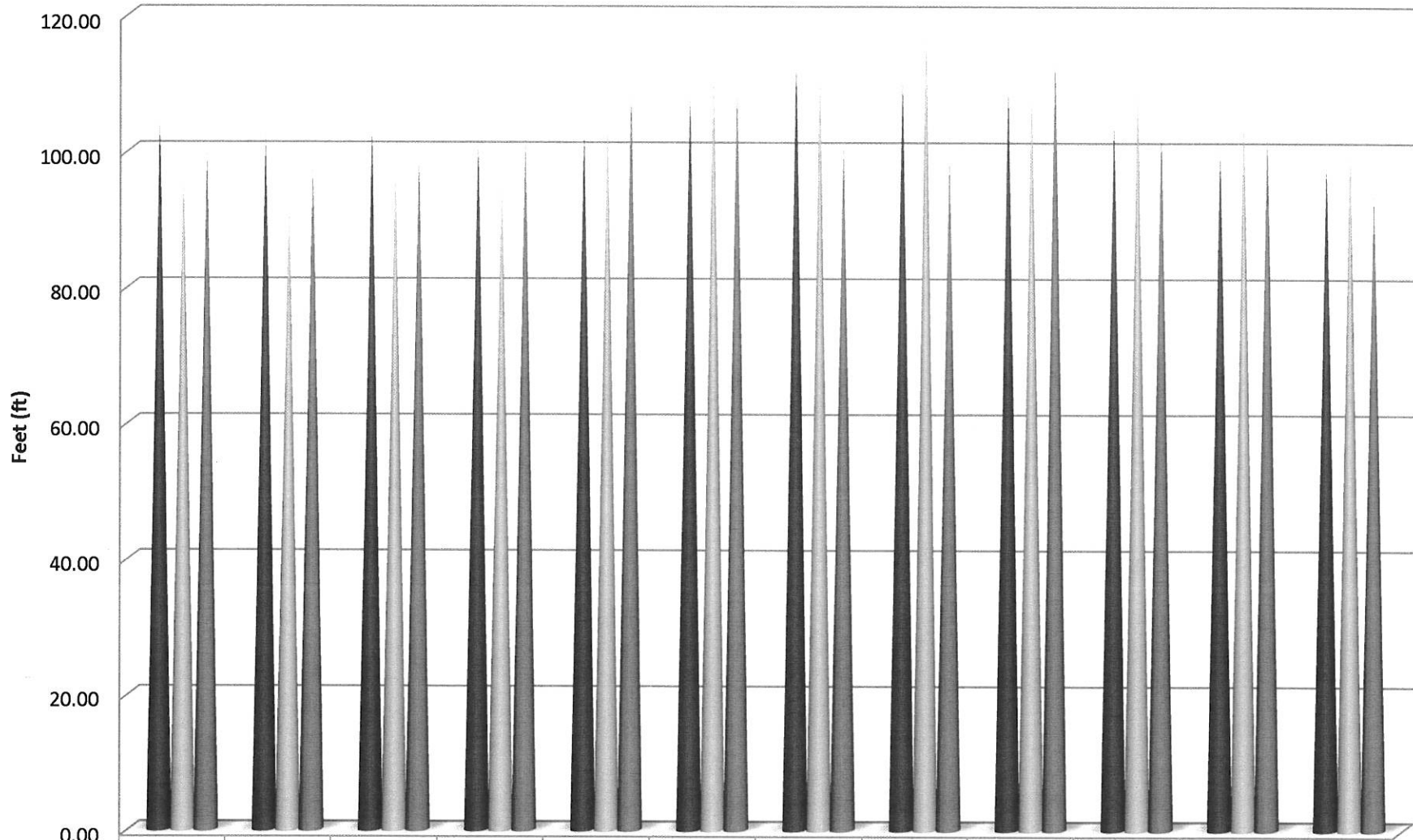
	Jan	Feb	Mar	Apr	May	Jun	Jul	Aug	Sep	Oct	Nov	Dec
■ 2012	38.40	38.90	38.90	37.20	43.45	41.90	41.40	47.60	39.70	48.10	36.20	35.80
■ 2013	28.00	29.80	34.80	32.50	37.20	39.00	39.80	39.80	41.10	41.30	39.50	37.00
■ 2014	34.20	32.50	31.30	35.10	39.40	39.70	41.10	40.70	31.20	34.30	34.90	30.80

3rd Street Well Static Water Levels



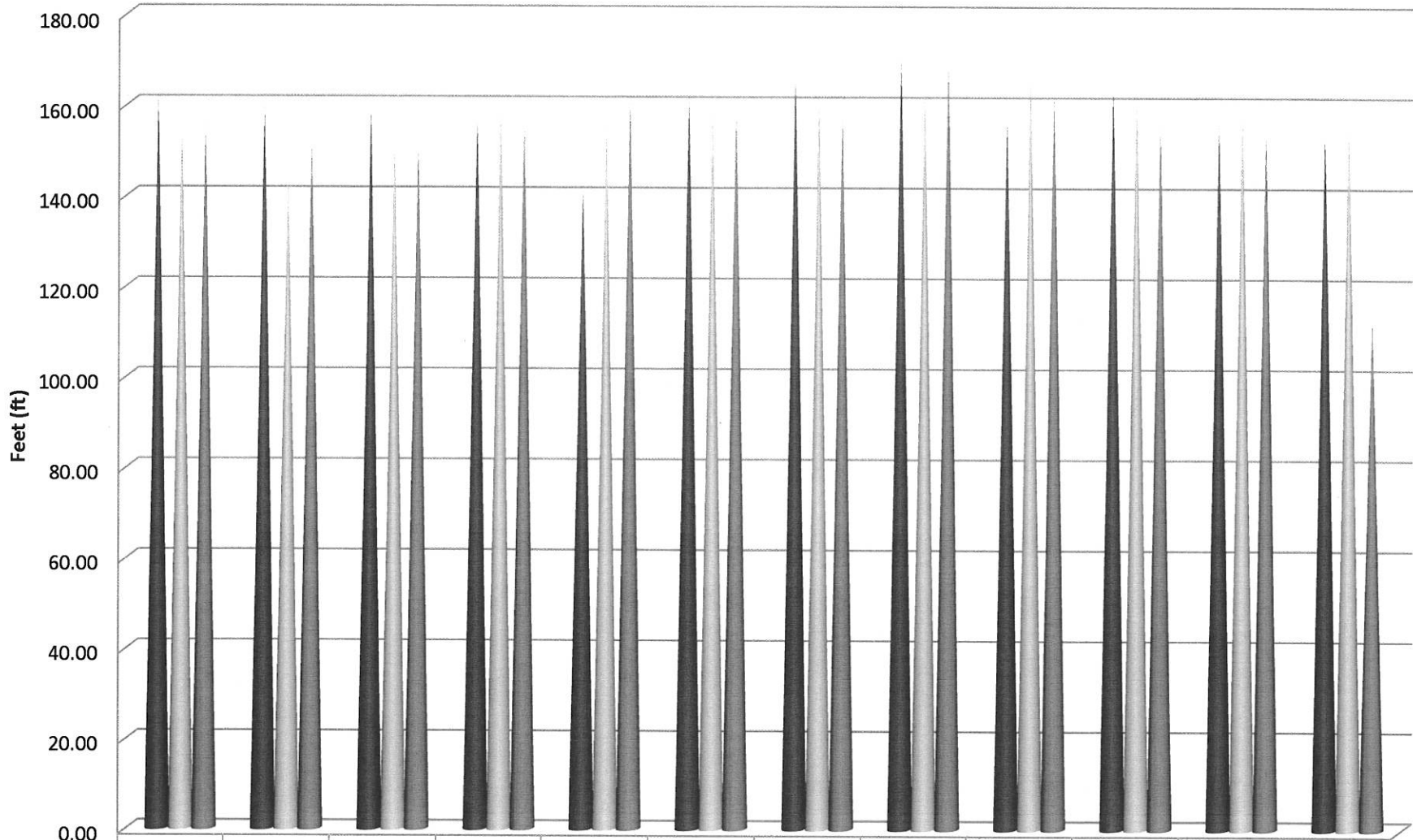
	Jan	Feb	Mar	Apr	May	Jun	Jul	Aug	Sep	Oct	Nov	Dec
■ 2012									5.25	6.20	4.80	7.50
■ 2013	6.50	6.30	7.10	7.50	6.50	7.30	7.00	7.30	7.70	7.90	7.50	8.45
■ 2014	5.00	7.10	6.90	7.10	7.70	7.55	7.30	5.90	7.80	6.20	6.70	6.50

Palisades Well Static Water Levels



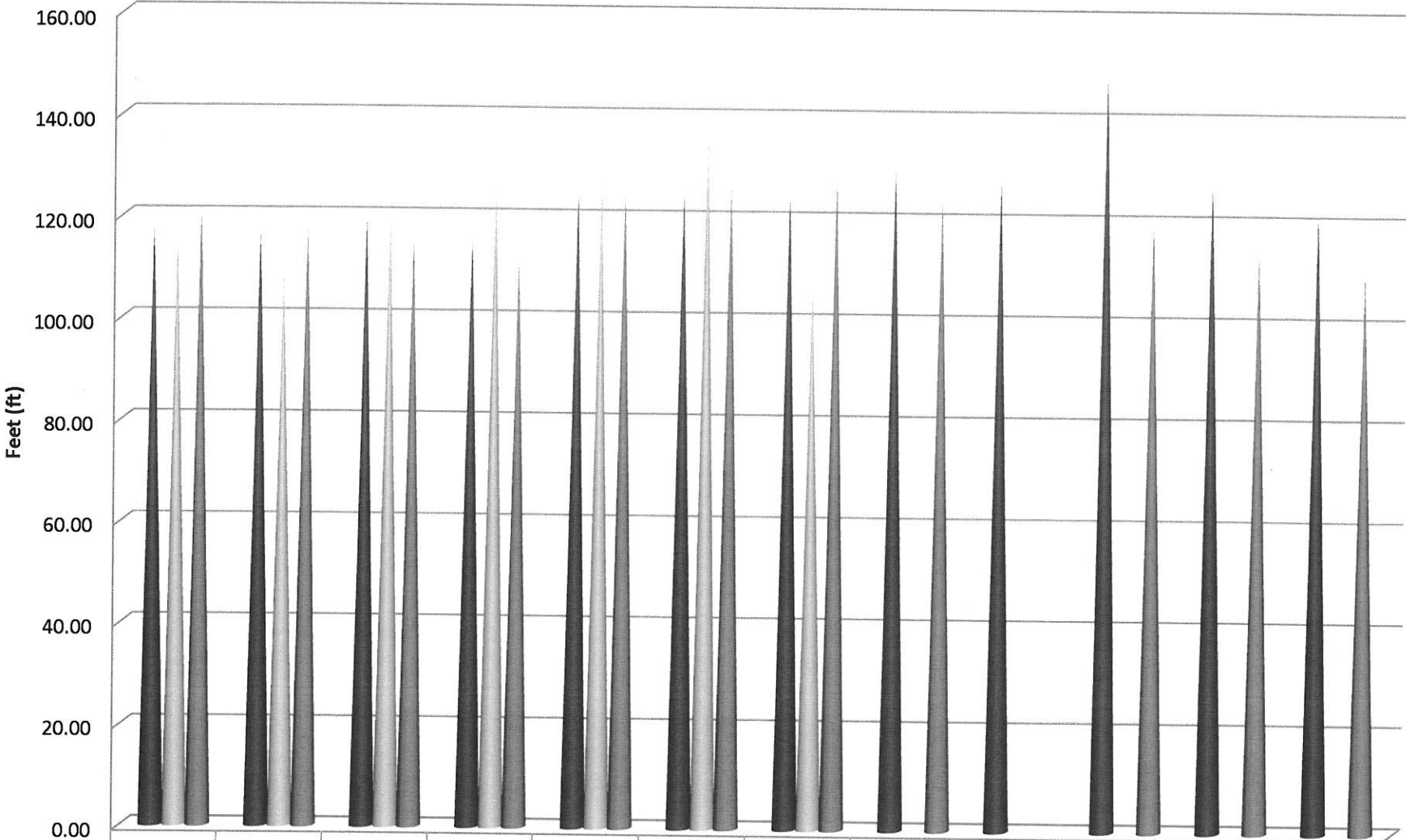
	Jan	Feb	Mar	Apr	May	Jun	Jul	Aug	Sep	Oct	Nov	Dec
■ 2012	105.00	102.60	103.50	102.30	103.10	109.30	113.80	111.40	110.30	104.60	100.90	98.50
■ 2013	97.20	92.30	97.90	96.20	104.90	113.60	112.60	118.70	109.80	109.90	106.50	101.35
■ 2014	100.40	98.60	99.90	102.10	109.85	110.3	101.60	100.05	114.80	103.70	103.60	94.00

10th Street Well Static Water Levels



	Jan	Feb	Mar	Apr	May	Jun	Jul	Aug	Sep	Oct	Nov	Dec
■ 2012	162.85	160.60	159.90	158.80	142.50	163.50	168.00	171.90	158.80	164.60	157.40	154.60
■ 2013	157.00	144.90	152.90	161.60	156.80	161.30	163.90	164.80	168.40	164.30	161.20	157.45
■ 2014	156.20	152.40	152.60	156.80	162.90	160.15	159.30	171.30	163.50	156.90	156.70	113.80

South Bay Lower Well Static Water Levels



	Jan	Feb	Mar	Apr	May	Jun	Jul	Aug	Sep	Oct	Nov	Dec
■ 2012	118.60	118.20	120.30	117.10	125.70	127.10	126.20	131.20	129.70	149.60	129.00	122.60
■ 2013	117.25	109.90	121.60	127.60	127.50	139.00	108.60					
■ 2014	122.10	118.90	116.80	112.90	126.00	128.50	129.30	125.60		121.40	116.20	111.30