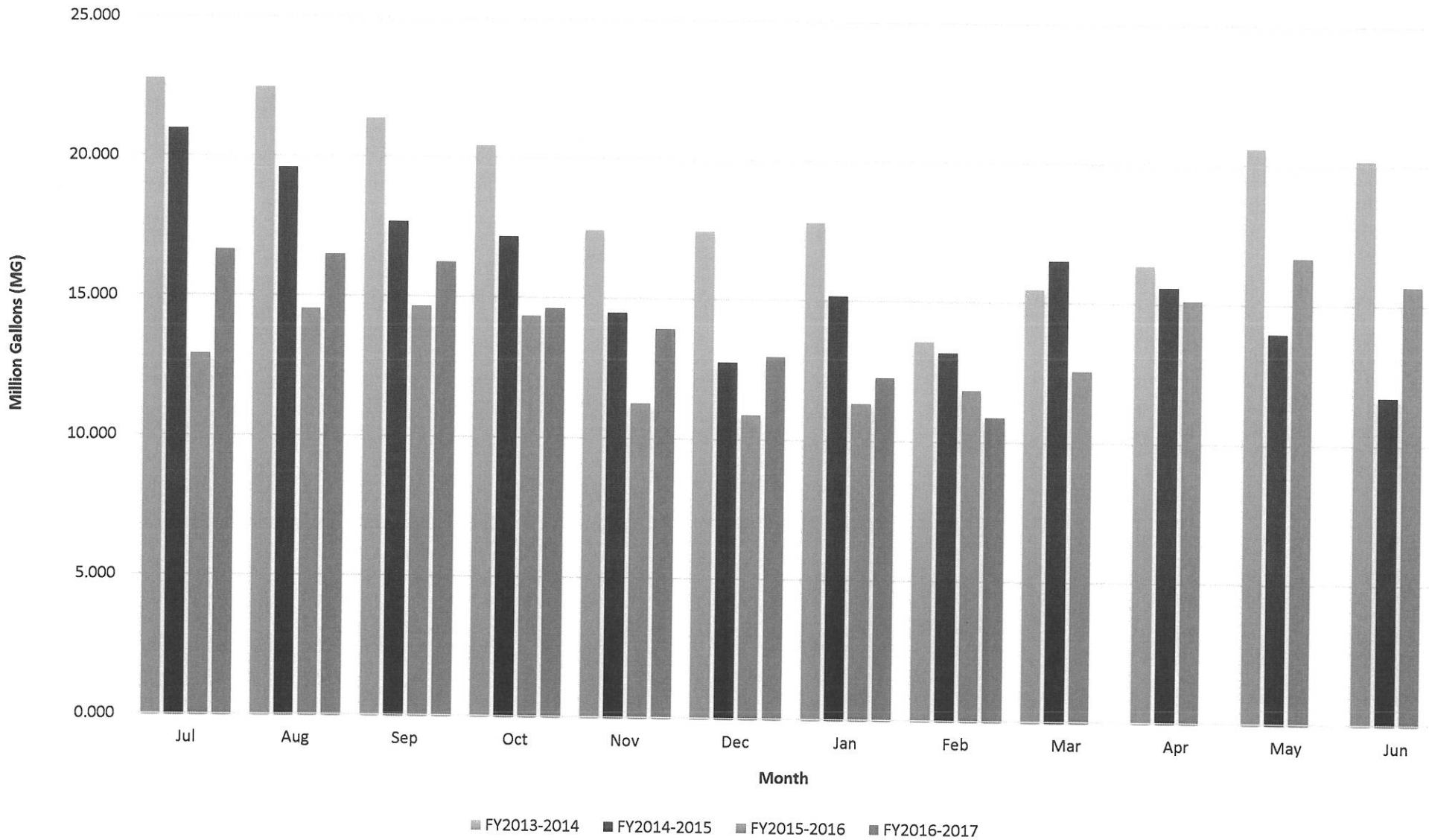


<b>FEBRUARY 2017</b>	<b>8th St./ EI Moro Well</b>	<b>3rd St./ Bayside Well</b>	<b>10th St. Well</b>	<b>South Bay Well</b>	<b>South Bay Upper Well</b>	<b>Palisades Well</b>	<b>All Wells TOTAL</b>	<b>Last Years TOTAL</b>	<b>Percent% Differential</b>
Total Gallons Produced, Mgal	3.5101	0.0000	2.3489	1.8565	0.6810	2.4821	<b>10.8786</b>	11.839	-8.11%
Average Daily Flow, Mgal							0.3885		
Total Gallons to Waste (Filter Backwash), Mgal	0.0392			0.0000	0.0000		0.0392	0.0038	
Total Gallons to Waste (System Flushing), Mgal							0.0000	0.0000	
Distribution System Losses (Water Line Breaks), Mgal							0.0000	0.0000	
Total Gallons Adjusted, Mgal	3.4709			1.8565			<b>10.8394</b>	11.8352	-8.41%
Pump Runtime, total hours	155.0	0.0	126.7	651.5	302.5	102.0	1337.7	1278.2	4.65%
Daily Avg. Runtime, hours/day	5.2	0.0	4.2	21.7	10.1	3.4			
Energy Used, kWatts	532	29	5701	9724		4187	20173	27870	-27.62%
Eff. Ratio, kWatts/hr	3.43	0.00	45.00	14.93		41.05			
Chlorine Used, total gallons	48.4	0.0	16.3	29.8		16.4	110.9	161.9	-31.52%
Aqua Mag, pounds	24.4		10.0	0.0		12.2	46.6	55.2	-15.58%
Static water level, ft.	0.00	0.00	0.00	0.00	0.00	0.00			
Pump water level, ft.	0.00	0.00	0.00	0.00	0.00	0.00	<b>No sounding data for February</b>		
Draw-down level, ft.	0.00	0.00	0.00	0.00	0.00	0.00			
Gallons per minute	0	0	0	0	0	0	<b>3rd St. Well out of service</b>		
Pressure, psi	0	0	0	0	0	0			

Well Log Summaries

## Historical to Present LOCSO Well Production Data

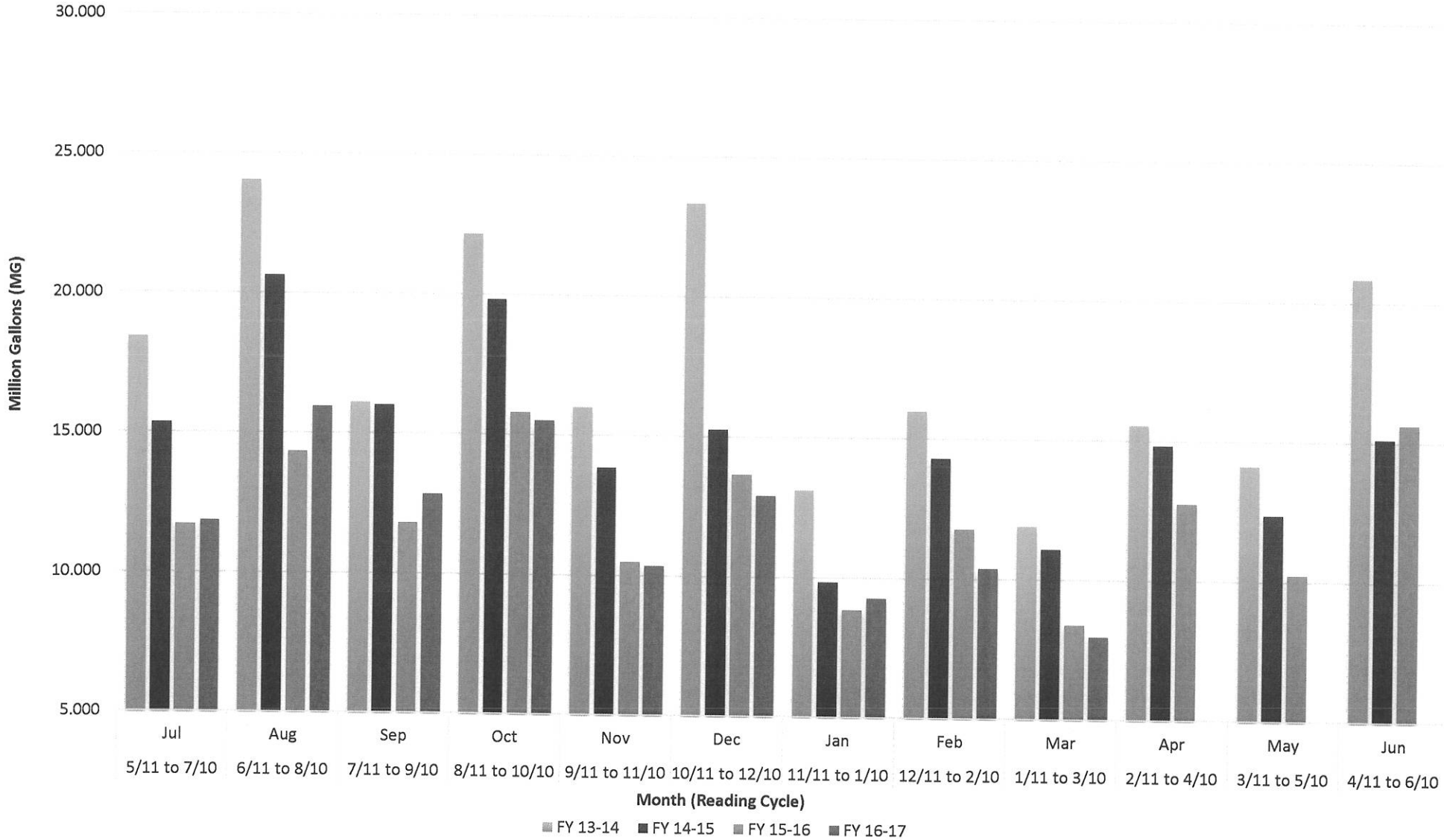


## LOCSD Water Data

<b>Water Production Data in Million Gallons</b>					
	<b>FY 12-13</b>	<b>FY 13-14</b>	<b>FY 14-15</b>	<b>FY 15-16</b>	<b>FY 16-17</b>
Jul	25.600	22.779	20.979	12.924	16.640
Aug	23.862	22.470	19.593	14.527	16.475
Sep	21.340	21.380	17.667	14.640	16.233
Oct	19.708	20.431	17.169	14.357	14.624
Nov	16.939	17.436	14.482	11.256	13.921
Dec	14.747	17.431	12.759	10.891	12.974
Jan	15.268	17.780	15.174	11.329	12.247
Feb	14.940	13.584	13.171	11.839	10.879
Mar	18.193	15.476	16.508	12.562	
Apr	21.118	16.354	15.591	15.117	
May	22.310	20.591	13.966	16.695	
Jun	22.743	20.179	11.731	15.674	
<b>TOTAL</b>	<b>236.767</b>	<b>225.890</b>	<b>188.790</b>	<b>161.807</b>	<b>113.993</b>

Consumption is billed for a two month period every month.  
 Revenue is based on gallons billed - not cash received.  
 Production is recorded daily.

## Historical to Present LOCS D Water Consumption Based on Billing

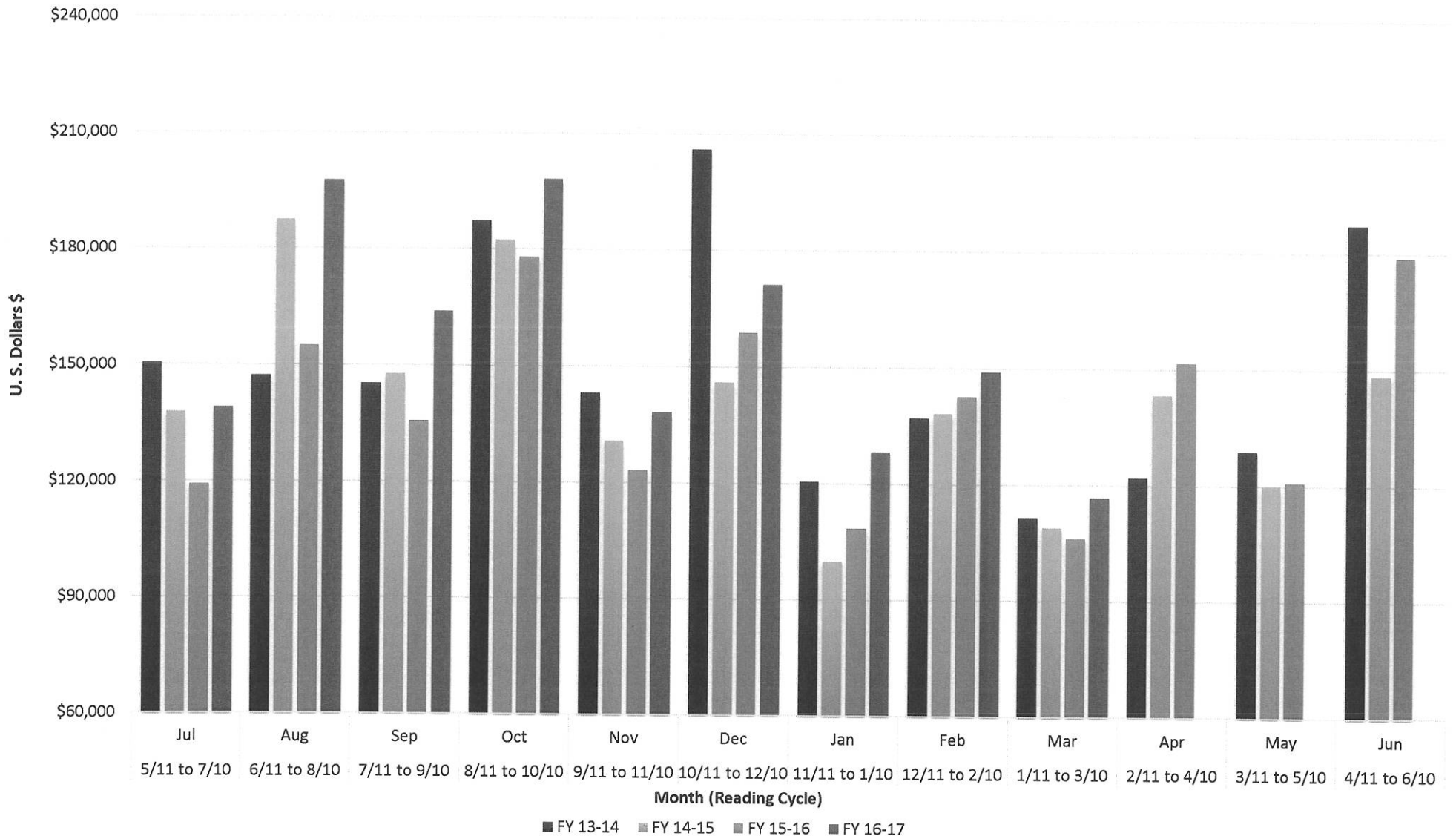


## LOCSD Water Data

Water Consumption Data in Million Gallons							
% of Service Area	Billing Period		FY 12-13	FY 13-14	FY 14-15	FY 15-16	FY 16-17
43	5/11 to 7/10	Jul	18.110	18.402	15.330	11.709	11.849
57	6/11 to 8/10	Aug	26.006	24.061	20.627	14.342	15.953
43	7/11 to 9/10	Sep	19.748	16.087	15.989	11.812	12.827
57	8/11 to 10/10	Oct	21.617	22.142	19.804	15.787	15.492
43	9/11 to 11/10	Nov	16.155	15.994	13.830	10.499	10.349
57	10/11 to 12/10	Dec	17.096	23.342	15.236	13.647	12.910
43	11/11 to 1/10	Jan	12.406	13.105	9.828	8.841	9.265
57	12/11 to 2/10	Feb	16.223	15.969	14.276	11.770	10.367
43	1/11 to 3/10	Mar	12.737	11.886	11.079	8.373	7.953
57	2/11 to 4/10	Apr	16.756	15.559	14.829	12.762	
43	3/11 to 5/10	May	16.686	14.131	12.367	10.222	
57	4/11 to 6/10	Jun	22.709	20.852	15.111	15.624	
<b>TOTAL</b>			<b>216.249</b>	<b>211.530</b>	<b>178.306</b>	<b>145.388</b>	<b>106.966</b>

Consumption is billed for a two month period every month.  
 Revenue is based on gallons billed - not cash received.  
 Production is recorded daily.

## Historical to Present LOCSD Water Revenue Based on Billing



## LOCSD Water Data

### Water Revenue Data

<b>% of Service Area</b>	<b>Billing Period</b>		<b>FY 12-13</b>	<b>FY 13-14</b>	<b>FY 14-15</b>	<b>FY 15-16</b>	<b>FY 16-17</b>
43	5/11 to 7/10	Jul	\$127,737.70	\$150,401.90	\$137,752.98	\$119,138.01	\$139,017.75
57	6/11 to 8/10	Aug	\$175,798.70	\$147,246.54	\$187,468.02	\$154,995.56	\$197,721.40
43	7/11 to 9/10	Sep	\$139,628.43	\$145,135.28	\$147,808.06	\$135,669.34	\$163,852.81
57	8/11 to 10/10	Oct	\$163,698.98	\$187,431.78	\$182,463.96	\$178,030.01	\$198,170.30
43	9/11 to 11/10	Nov	\$128,918.55	\$143,029.03	\$130,772.31	\$123,221.32	\$138,130.97
57	10/11 to 12/10	Dec	\$142,026.32	\$206,187.91	\$145,977.27	\$158,798.89	\$171,281.05
43	11/11 to 1/10	Jan	\$104,328.08	\$120,500.40	\$99,970.19	\$108,532.26	\$128,300.48
57	12/11 to 2/10	Feb	\$132,433.64	\$137,045.65	\$138,344.52	\$142,733.88	\$149,015.80
43	1/11 to 3/10	Mar	\$95,487.96	\$111,475.31	\$109,092.25	\$106,198.53	\$116,824.26
57	2/11 to 4/10	Apr	\$135,947.81	\$121,943.68	\$143,355.32	\$151,554.05	
43	3/11 to 5/10	May	\$133,939.00	\$128,784.61	\$120,013.25	\$120,748.17	
57	4/11 to 6/10	Jun	\$172,139.37	\$187,230.13	\$148,384.13	\$178,943.85	
		<b>TOTAL</b>	<b>\$1,652,084.54</b>	<b>\$1,786,412.22</b>	<b>\$1,691,402.26</b>	<b>\$1,678,563.87</b>	<b>\$1,402,314.82</b>

Consumption is billed for a two month period every month.  
 Revenue is based on gallons billed - not cash received.  
 Production is recorded daily.