



November 20, 2014

TO: LOCSO Board of Directors
FROM: Margaret Falkner, Utility Compliance Technician III *mf*
SUBJECT: **Agenda Item 9B – 12/04/2014 Board Meeting**
 Utilities Department Report for October 2014

President
 Craig V. Baltimore

Vice President
 R. Michael Wright

Directors
 Leonard A. Moothart
 Marshall E. Ochylski
 Jon-Erik G. Storm

General Manager
 Kathy A. Kivley

District Accountant
 Michael L. Doyel

Fire Chief
 Robert Lewin

Battalion Chief
 Phill Veneris

Mailing Address:
 P.O. Box 6064
 Los Osos, CA 93412

Offices:
 2122 9th Street, Suite 102
 Los Osos, CA 93402

Phone: 805/528-9370
FAX: 805/528-9377

WATER PRODUCTION

The total production for the month of **October 2014** was approximately **17.2 million gallons (MG)** this equates to an average daily demand of 553,800 gallons. This represents a **decrease** in production from last year by approximately **16%**.

Forty-three percent of the service area received bills for approximately **13.8 MG** consumption for the period **September 10, 2014 through November 13, 2014**. This generated **\$130,772** in revenue. This represents approximately a decrease of approximately **13%** in consumption and approximately **8%** decrease in revenue when compared to last year at this time.

PRODUCTION AND RUNTIME HOURS BY WELL SITE

Below are two tables that break down the production by well site and the runtime on the pump motor for the month of October 2014. Last year's totals are included for comparison:

Production (MG) October	2014	2013
Palisades	5.0120	7.2510
3rd Street	3.2029	2.9189
El Moro	4.1815	5.2594
10th Street	4.7727	5.0019
South Bay (lower)	0.0000	0.0000
South Bay (upper)	0.0000	0.0000
TOTAL:	17.1691	20.4312

Runtime (Hours) October	2014	2013
Palisades	152.9	212.0
3rd St	724.2	672.4
El Moro	202.7	247.2
10th St	259.7	272.3
South Bay (lower)	0.0	0.0
South Bay (upper)	0.0	0.0
TOTAL:	1,339.5	1,403.9

Please refer to the attached October 2014 "Well Log Summary" for more data regarding production, runtime hours, chemical usage, soundings, and alarms.

CALIFORNIA STATE OF EMERGENCY DUE TO DROUGHT

On January 17, 2014, Governor Brown declared an emergency due to drought. He has called on all Californians to restrain water use. Attached to this report are graphs with tables which provide information on the District's water well depths. **We are officially in a drought.**

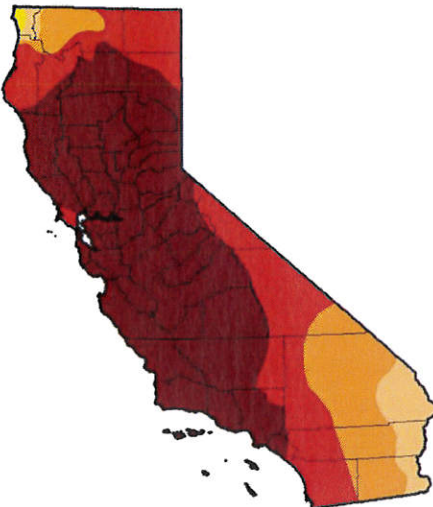
Home
Maps And Data
Supplemental Info
About USDM
USDM News
Update Bookmarks

United States Drought Monitor

Home > State Drought Monitor

U.S. Drought Monitor

California



Download: [PNG](#) [PDF](#) [JPG](#)

November 11, 2014
(Released Thursday November 13, 2014)
 Valid 7 a.m. EST

Statistics type: Traditional (D0-D4, D1-D4, etc.) Categorical (D0, D1, etc.)

Drought Condition (Percent Area):

Week	Date	None	D0-D4	D1-D4	D2-D4	D3-D4	D4
Current	2014-11-11	0.00	100.00	99.72	94.42	79.69	55.08
Last Week	2014-11-04	0.00	100.00	99.71	94.42	79.69	55.08
3 Months Ago	2014-08-12	0.00	100.00	100.00	99.80	81.92	58.41
Start of Calendar Year	2013-12-31	2.61	97.39	94.25	87.53	27.59	0.00
Start of Water Year	2014-09-30	0.00	100.00	100.00	95.04	81.92	58.41
One Year Ago	2013-11-12	2.61	97.39	96.00	84.12	11.36	0.00

Population Affected by Drought: **37,241,336** [View More Statistics](#)

Intensity:

D0 - Abnormally Dry

D3 - Extreme Drought

D1 - Moderate Drought

D4 - Exceptional Drought

The Drought Monitor focuses on broad-scale conditions. Local conditions may vary. See accompanying [text summary](#) for forecast statements.

Author(s):
 Matthew Rosencrans, NOAA/NWS/NCEP/CPC

WATER CONSERVATION

Our Water Conservation Message ***"Together We Can Bear It: Save Los Osos Water"***



A water conservation banner is being displayed on the northwest corner of Los Olivos Avenue and South Bay Boulevard. Messages continue to be displayed on the Rotary sign at the corner of Los Osos Valley Road and South Bay Boulevard. Staff handed out more water conservation fixtures at the Los Osos Farmers Market.

SAN LUIS OBISPO COUNTY WATER CONSERVATION REBATE PROGRAM

All Los Osos residents that will be connected to the Los Osos Wastewater Project may qualify for rebates on plumbing fixtures. The District web site has a link to the County's rebate web site in more than one location.

Here is a link to the County's web site which has a lot of information for residents in the prohibition zone. <http://conservelosos.org/>

UTILITIES DEPARTMENT OPERATIONS AND MAINTENANCE FOR WATER SYSTEM

During the month of October 2014, crew provided weekly water sampling for water permit compliance, read water meters for billing, and performed monthly well soundings. In addition to their regular schedule, crews were trained on the operations of the new nitrate removal facility at the South Bay Wells site. They assisted the consultants with the startup of the facility and took water quality samples along with samples from the ion exchange brine. The labs have to be verified and the facility inspected by the state before we can run the treated water to our distribution system. We are very close to completion of this project. Crews continued work on the meter replacement program, and fire hydrant maintenance.

Staff submitted the monthly monitoring report to the State Water Resource Control Board Drinking Water Division for October 2014 with no violations noted.

DRAINAGE WDID # 3 40M2000133

The District complies with the General National Pollutant Discharge Elimination System (NPDES) Permit for storm water discharges for small Municipal Separate Storm Sewer Systems (MS4). Under the new permit, all Community Services Districts are considered "Non-traditional" MS4s. Our annual report under the new permit was submitted to the state electronically on October 8, 2014 which covers the fiscal year July 2013 through June 2014.

BAYRIDGE ESTATES WDID# 3 401027001

Crews continue monitoring and groundskeeping. In October crews assisted the consultant with problems at the Bayridge septic pump #1. They also repaired a retaining wall at our Bayridge facility. Crews are beginning work on a long list of tasks required prior to connection to the County wastewater project.

Once connected to the Los Osos Wastewater Project, the District crews will no longer maintain the septic system.

VISTA DE ORO WDID# 3 401024001

Crews continue monitoring and groundskeeping. Crews are beginning work on a list of tasks required prior to connection to the County wastewater project.

Once connected to the Los Osos Wastewater Project, the District crews will no longer maintain the septic system.

RECOMMENDATION

Staff encourages the Board to ask any questions they may have with regard to the aforementioned report or any other related item that may be listed separately as an agenda item.

Attachments

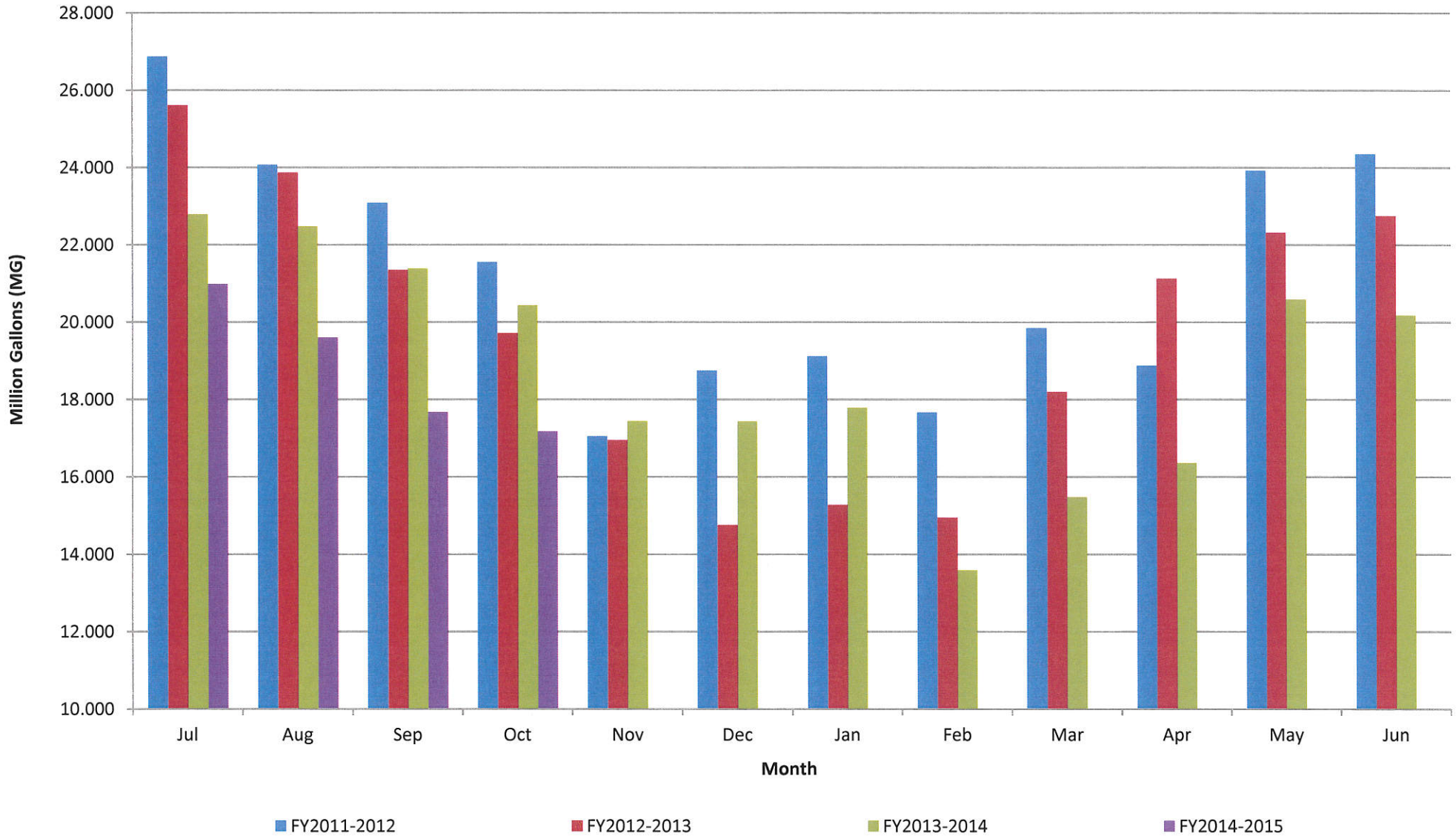
LOCSD Water Data

Water Production Data in Million Gallons

	FY 11-12	FY 12-13	FY 13-14	FY 14-15
Jul	26.868	25.600	22.779	20.979
Aug	24.064	23.862	22.470	19.593
Sep	23.086	21.340	21.380	17.668
Oct	21.543	19.708	20.431	17.169
Nov	17.046	16.939	17.436	
Dec	18.745	14.747	17.431	
Jan	19.117	15.268	17.780	
Feb	17.662	14.940	13.584	
Mar	19.843	18.193	15.476	
Apr	18.873	21.118	16.354	
May	23.914	22.310	20.591	
Jun	24.347	22.743	20.179	
TOTAL	255.107	236.767	225.890	75.410

Consumption is billed for a two month period every month.
Revenue is based on gallons billed - not cash received.
Production is recorded daily.

Historical to Present LOCS D Well Production Data

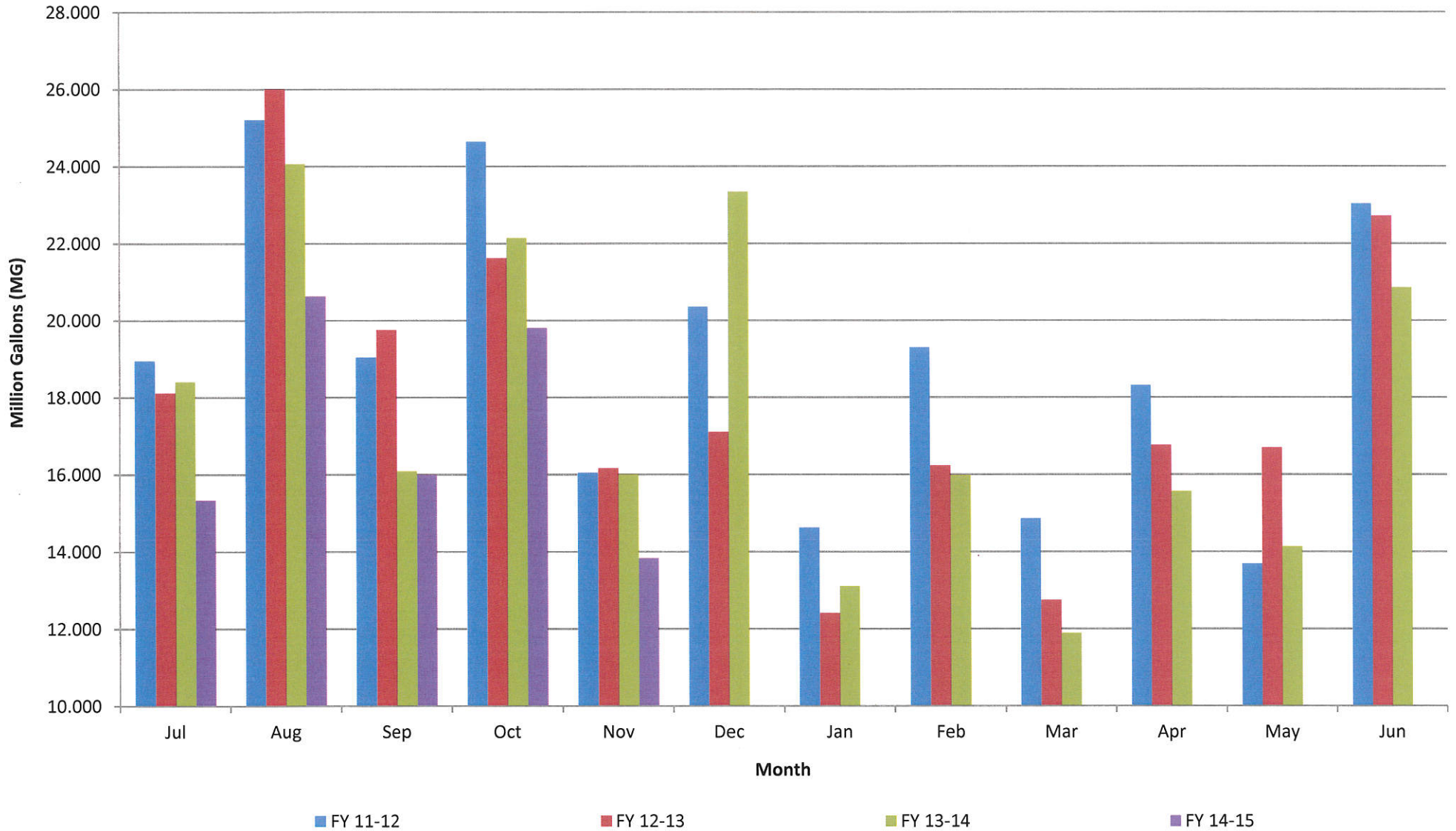


LOCSD Water Data

Water Consumption Data in Million Gallons						
% of Service Area	Billing Period		FY 11-12	FY 12-13	FY 13-14	FY 14-15
43	5/11 to 7/10	Jul	18.950	18.110	18.402	15.330
57	6/11 to 8/10	Aug	25.210	26.006	24.061	20.627
43	7/11 to 9/10	Sep	19.044	19.748	16.087	15.989
57	8/11 to 10/10	Oct	24.636	21.617	22.142	19.804
43	9/11 to 11/10	Nov	16.048	16.155	15.994	13.830
57	10/11 to 12/10	Dec	20.355	17.096	23.342	
43	11/11 to 1/10	Jan	14.623	12.406	13.105	
57	12/11 to 2/10	Feb	19.294	16.223	15.969	
43	1/11 to 3/10	Mar	14.858	12.737	11.886	
57	2/11 to 4/10	Apr	18.313	16.756	15.559	
43	3/11 to 5/10	May	13.685	16.686	14.131	
57	4/11 to 6/10	Jun	23.029	22.709	20.852	
		TOTAL	228.044	216.249	211.530	85.580

Consumption is billed for a two month period every month.
 Revenue is based on gallons billed - not cash received.
 Production is recorded daily.

Historical to Present LOCS D Water Consumption

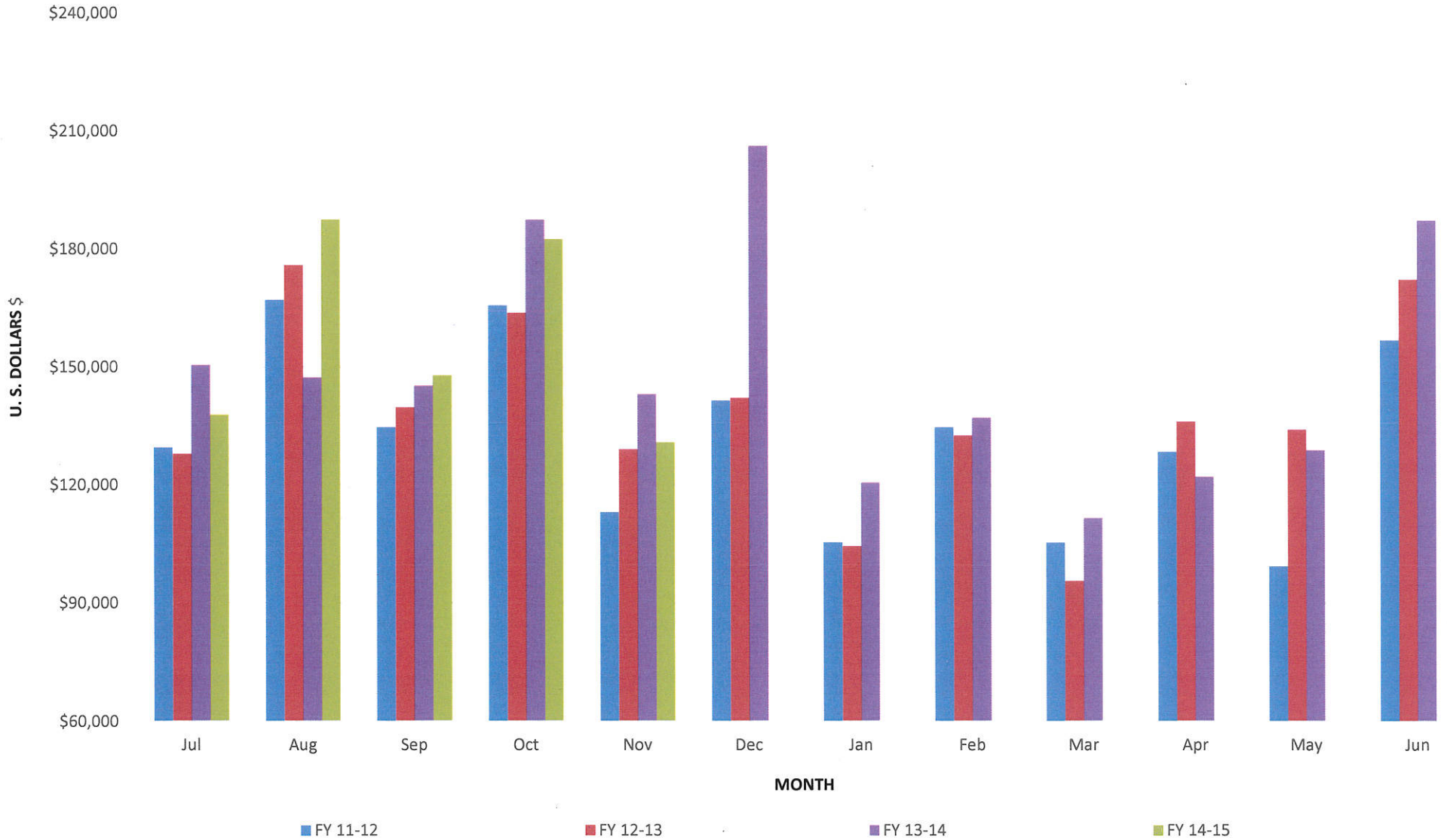


LOCSD Water Data

Water Revenue Data						
% of Service Area	Billing Period		FY 11-12	FY 12-13	FY 13-14	FY 14-15
43	5/11 to 7/10	Jul	\$129,524.46	\$127,737.70	\$150,401.90	\$137,752.98
57	6/11 to 8/10	Aug	\$167,062.07	\$175,798.70	\$147,246.54	\$187,468.02
43	7/11 to 9/10	Sep	\$134,650.62	\$139,628.43	\$145,135.28	\$147,808.06
57	8/11 to 10/10	Oct	\$165,624.63	\$163,698.98	\$187,431.78	\$182,463.96
43	9/11 to 11/10	Nov	\$113,044.46	\$128,918.55	\$143,029.03	\$130,772.31
57	10/11 to 12/10	Dec	\$141,492.06	\$142,026.32	\$206,187.91	
43	11/11 to 1/10	Jan	\$105,371.44	\$104,328.08	\$120,500.40	
57	12/11 to 2/10	Feb	\$134,692.14	\$132,433.64	\$137,045.65	
43	1/11 to 3/10	Mar	\$105,313.67	\$95,487.96	\$111,475.31	
57	2/11 to 4/10	Apr	\$128,368.97	\$135,947.81	\$121,943.68	
43	3/11 to 5/10	May	\$99,287.66	\$133,939.00	\$128,784.61	
57	4/11 to 6/10	Jun	\$156,744.35	\$172,139.37	\$187,230.13	
		TOTAL	\$1,581,176.53	\$1,652,084.54	\$1,786,412.22	\$786,265.33

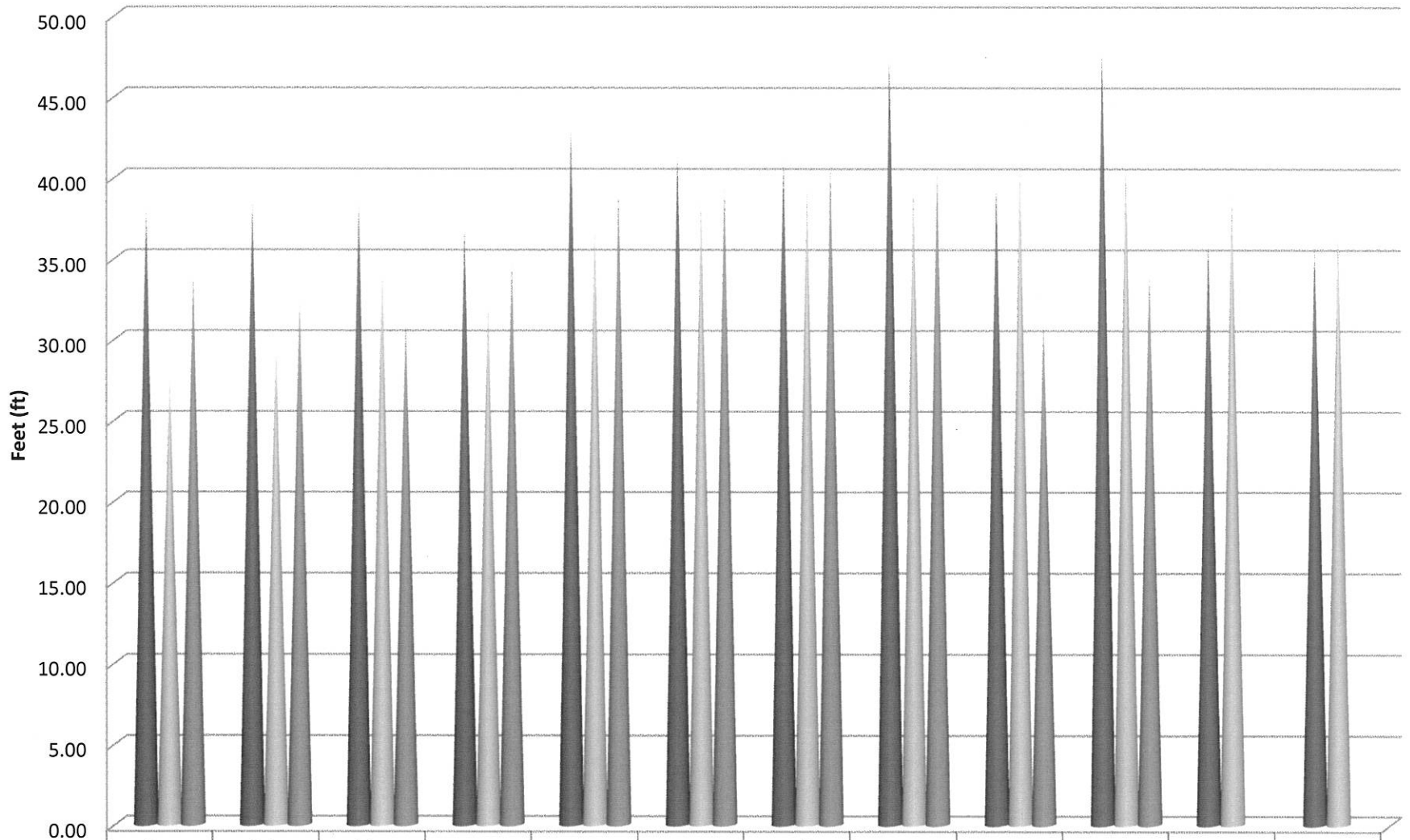
Consumption is billed for a two month period every month.
 Revenue is based on gallons billed - not cash received.
 Production is recorded daily.

Historical to Present LOCSD Water Revenue



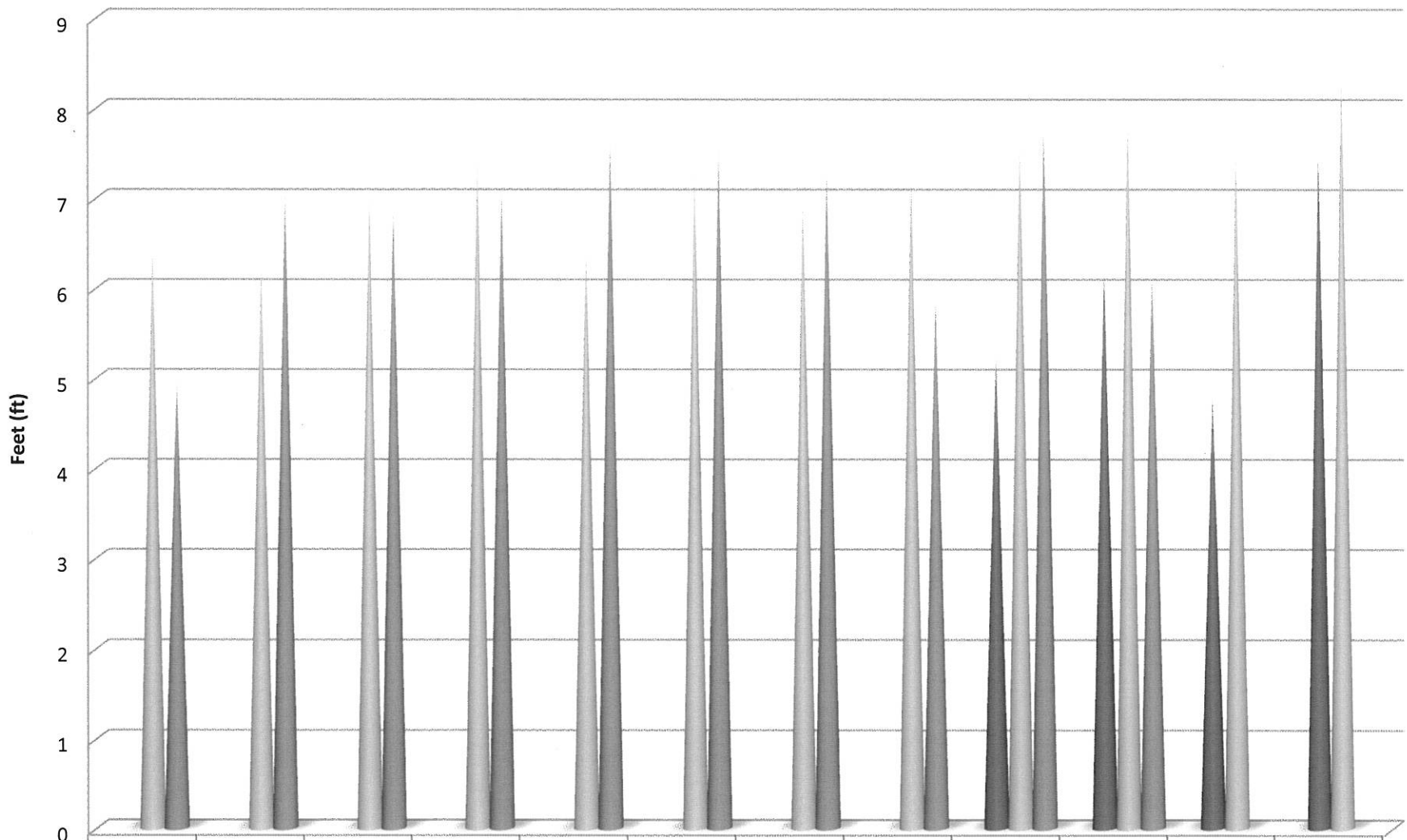
OCTOBER 2014	8th St./ EI Moro Well	3rd St./ Bayside Well	10th St. Well	South Bay Well	South Bay Upper Well	Palisades Well	All Wells TOTAL	Last Years TOTAL	Percent% Differential
Total Gallons Produced, Mgal	4.1815	3.2029	4.7727	0.0000	0.0000	5.0120	17.1691	20.4312	-15.97%
Average Daily Flow, Mgal							0.5538		
Total Gallons to Waste (Filter Backwash), Mgal	0.0000			0.0000	0.0000		0.0000	0	
Total Gallons to Waste (System Flushing), Mgal							0.0000	0	
Distribution System Losses (Water Line Breaks), Mgal							0.0000	0.0545	
Total Gallons Adjusted, Mgal	4.1815			0.0000	0.0000		17.1691	20.3767	-15.74%
Pump Runtime, total hours	202.7	724.2	259.7	0.0		152.9	1339.5	1403.9	-4.81%
Daily Avg. Runtime, hours/day	6.5	23.4	8.4	0.0		4.9			
Energy Used, kWatts	8092	5755	10846	279		11703	36675	43476	-15.64%
Eff. Ratio, kWatts/hr	39.92	7.95	41.76	0.00		76.54			
Chlorine Used, total gallons	64.7	51.2	25.6	0.0		44.4	185.8	170.3	9.12%
Aqua Mag, pounds	69.6		52.2	0.0		35.6	157.4	198.8	-20.82%
Static water level, ft.	34.30	6.20	156.90	121.40	94.70	103.70			
Pump water level, ft.	142.00	54.90	241.20	0.00	0.00	252.30	Both South Bay Wells Out of Service		
Draw-down level, ft.	107.70	48.70	84.30	0.00	0.00	148.60			
Gallons per minute	350	76	336	0	0	508			
Pressure, psi	94	83	35	0	0	88			
Alarm Events									
YES / NO	YES	YES	NO	NO	NO	YES			
Type of event									
Well Failure	0	0	0	0	0	0	0		
Power Failure	0	0	0	0	0	0	0		
Low Chlorine	1	2	0	0	0	0	3		
Other:	3	0	0	0	0	1	4		
Total number alarms	4	2	0	0	0	1	7	8	-12.50%

8th Street Well Static Water Levels



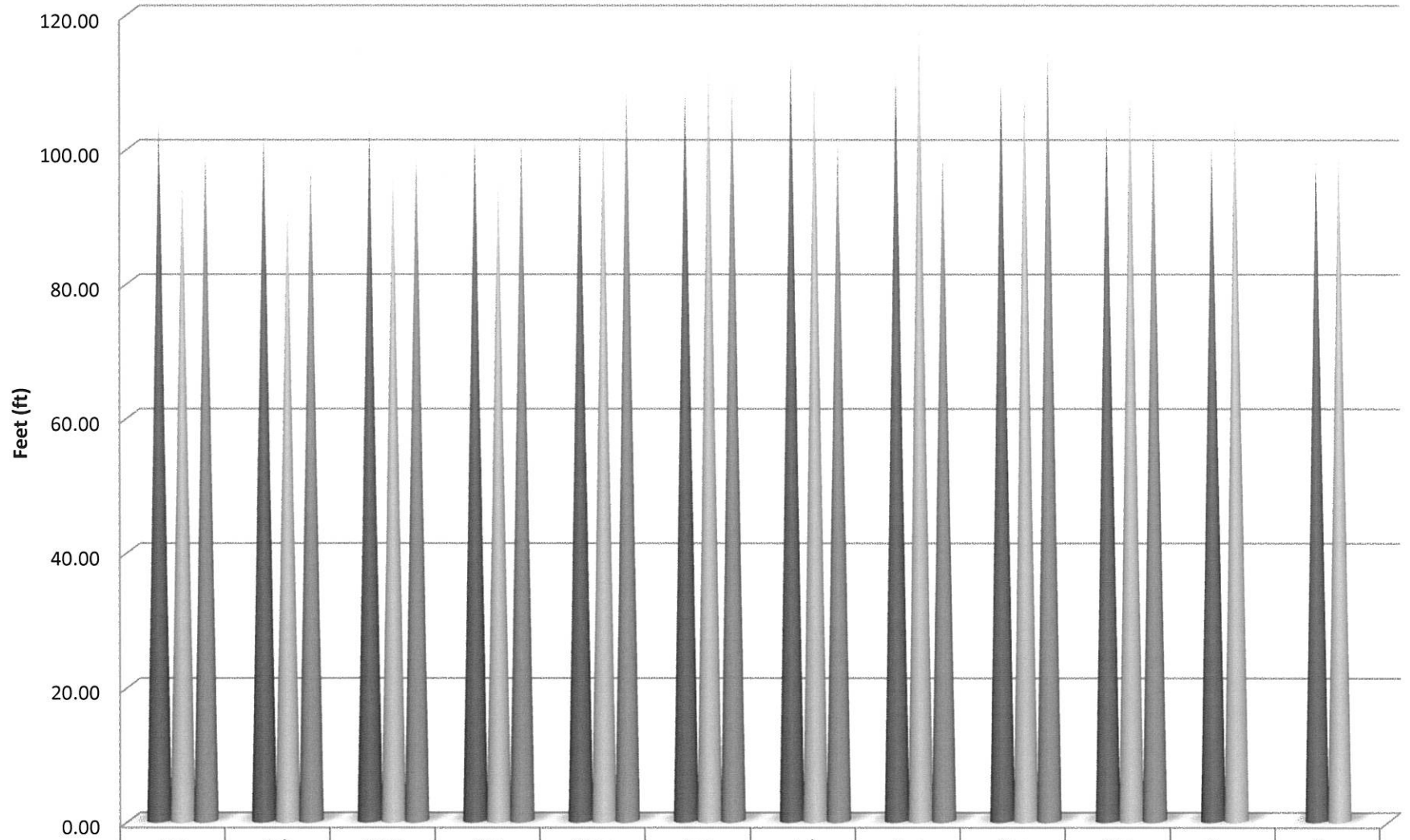
	Jan	Feb	Mar	Apr	May	Jun	Jul	Aug	Sep	Oct	Nov	Dec
■ 2012	38.40	38.90	38.90	37.20	43.45	41.90	41.40	47.60	39.70	48.10	36.20	35.80
■ 2013	28.00	29.80	34.80	32.50	37.20	39.00	39.80	39.80	41.10	41.30	39.50	37.00
■ 2014	34.20	32.50	31.30	35.10	39.40	39.70	41.10	40.70	31.20	34.30		

3rd Street Well Static Water Levels



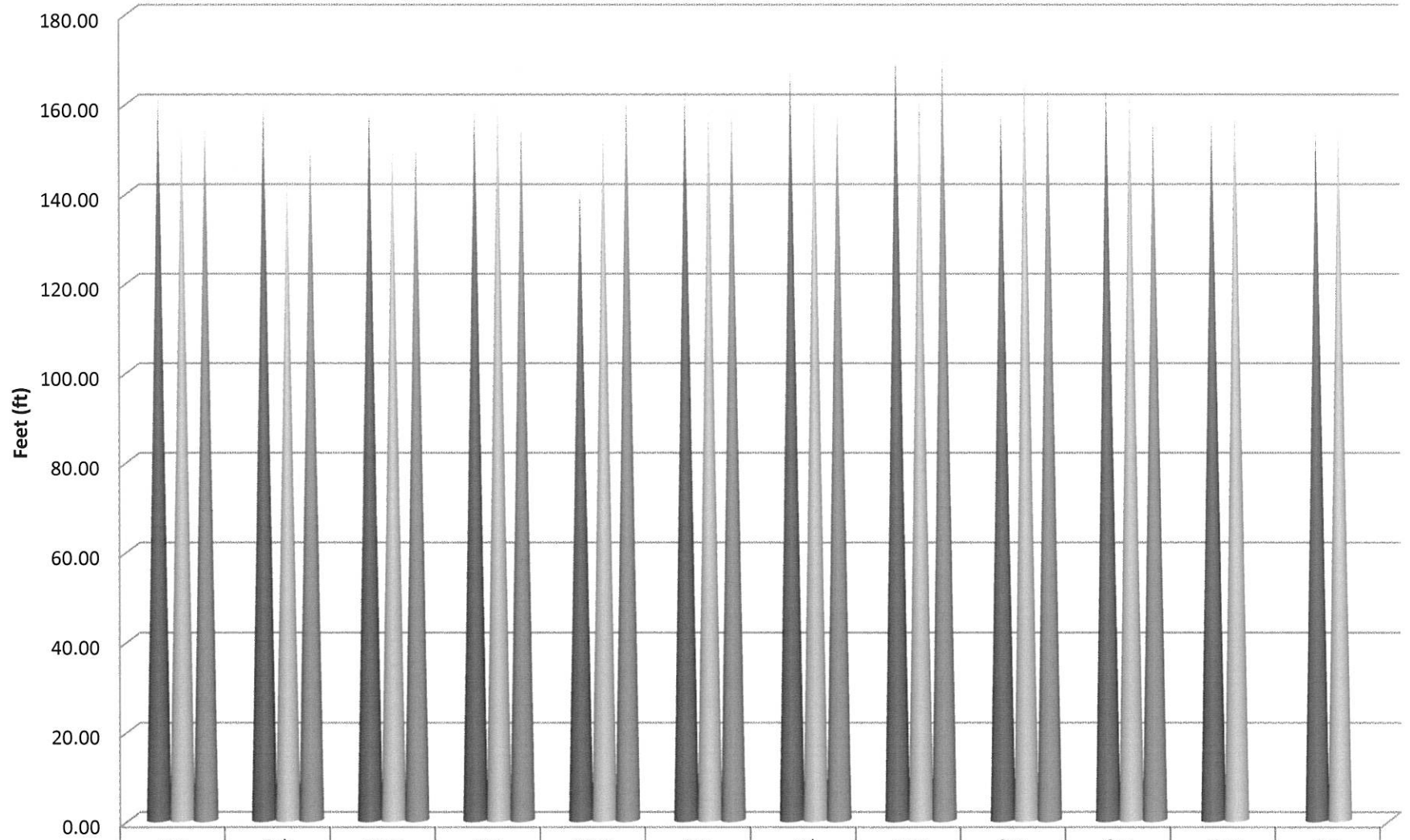
	Jan	Feb	Mar	Apr	May	Jun	Jul	Aug	Sep	Oct	Nov	Dec
2012									5.25	6.20	4.80	7.50
2013	6.50	6.30	7.10	7.50	6.50	7.30	7.00	7.30	7.70	7.90	7.50	8.45
2014	5.00	7.10	6.90	7.10	7.70	7.55	7.30	5.90	7.80	6.20		

Palisades Well Static Water Levels



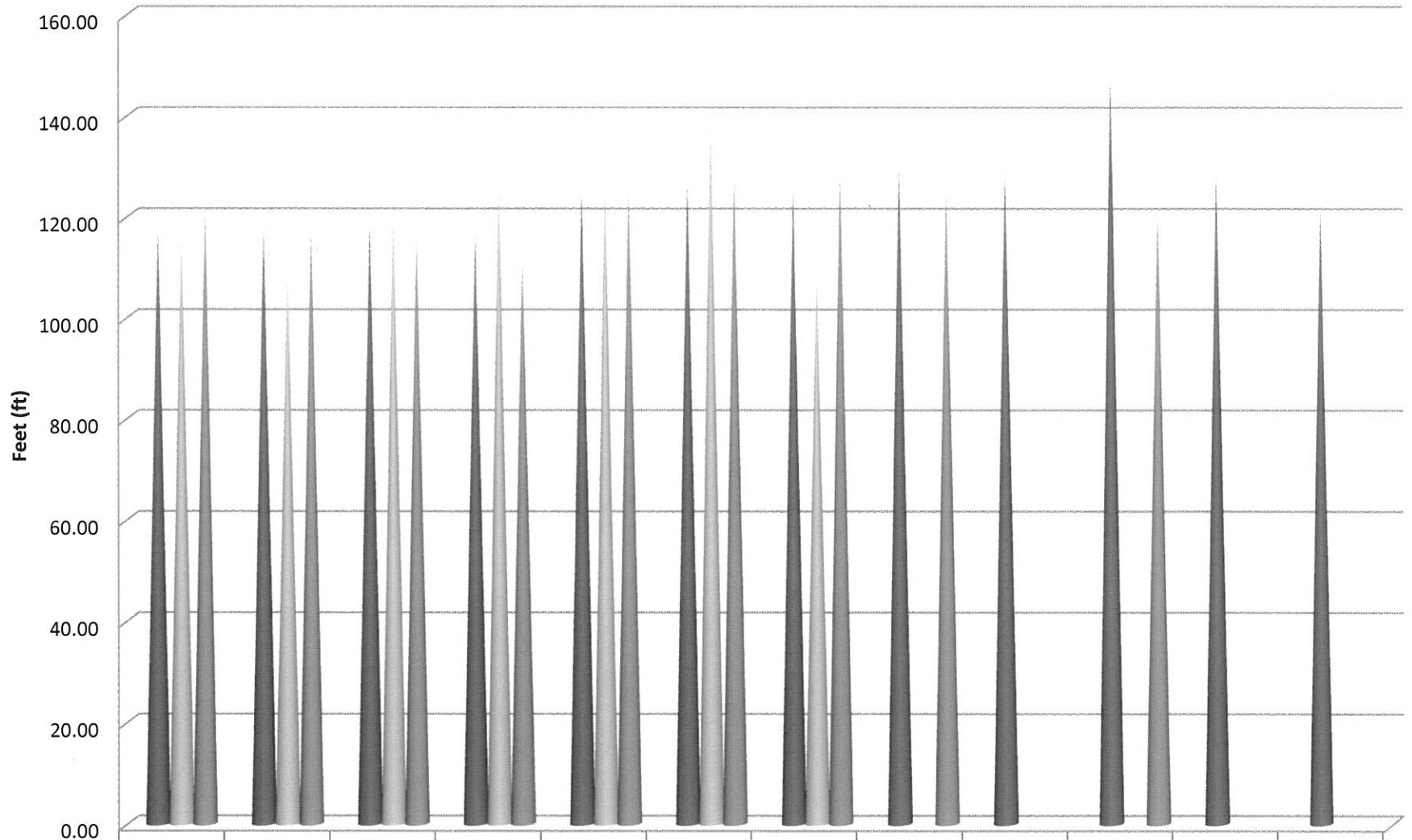
	Jan	Feb	Mar	Apr	May	Jun	Jul	Aug	Sep	Oct	Nov	Dec
2012	105.00	102.60	103.50	102.30	103.10	109.30	113.80	111.40	110.30	104.60	100.90	98.50
2013	97.20	92.30	97.90	96.20	104.90	113.60	112.60	118.70	109.80	109.90	106.50	101.35
2014	100.40	98.60	99.90	102.10	109.85	110.3	101.60	100.05	114.80	103.70		

10th Street Well Static Water Levels



	Jan	Feb	Mar	Apr	May	Jun	Jul	Aug	Sep	Oct	Nov	Dec
■ 2012	162.85	160.60	159.90	158.80	142.50	163.50	168.00	171.90	158.80	164.60	157.40	154.60
▨ 2013	157.00	144.90	152.90	161.60	156.80	161.30	163.90	164.80	168.40	164.30	161.20	157.45
■ 2014	156.20	152.40	152.60	156.80	162.90	160.15	159.30	171.30	163.50	156.90		

South Bay Lower Well Static Water Levels



	Jan	Feb	Mar	Apr	May	Jun	Jul	Aug	Sep	Oct	Nov	Dec
■ 2012	118.60	118.20	120.30	117.10	125.70	127.10	126.20	131.20	129.70	149.60	129.00	122.60
■ 2013	117.25	109.90	121.60	127.60	127.50	139.00	108.60					
■ 2014	122.10	118.90	116.80	112.90	126.00	128.50	129.30	125.60		121.40		